

# **Appendix A**

## **Figures**

# Individual Environmental Report Project Areas

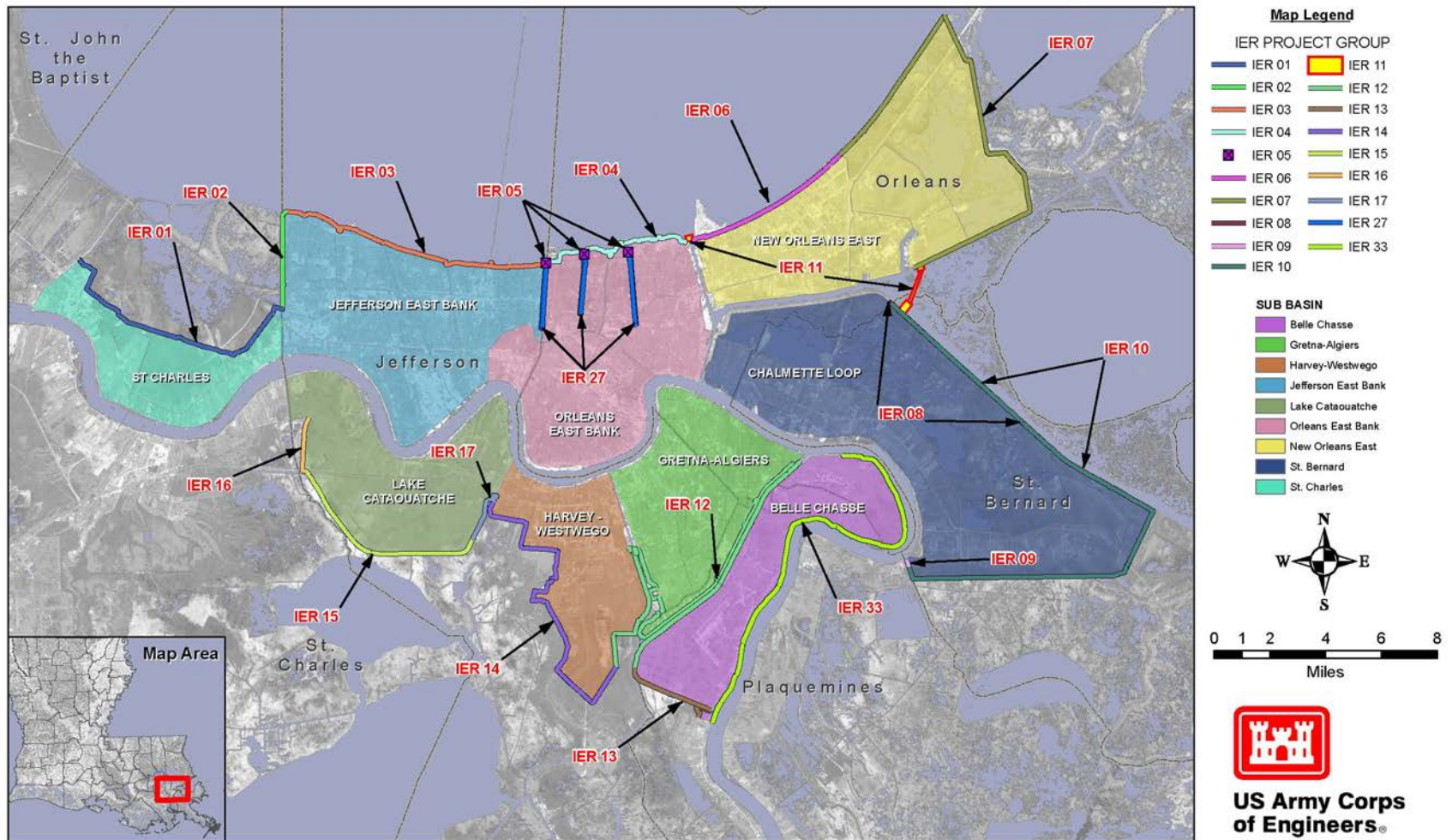


Figure 1: HSDRRS IER Project Areas

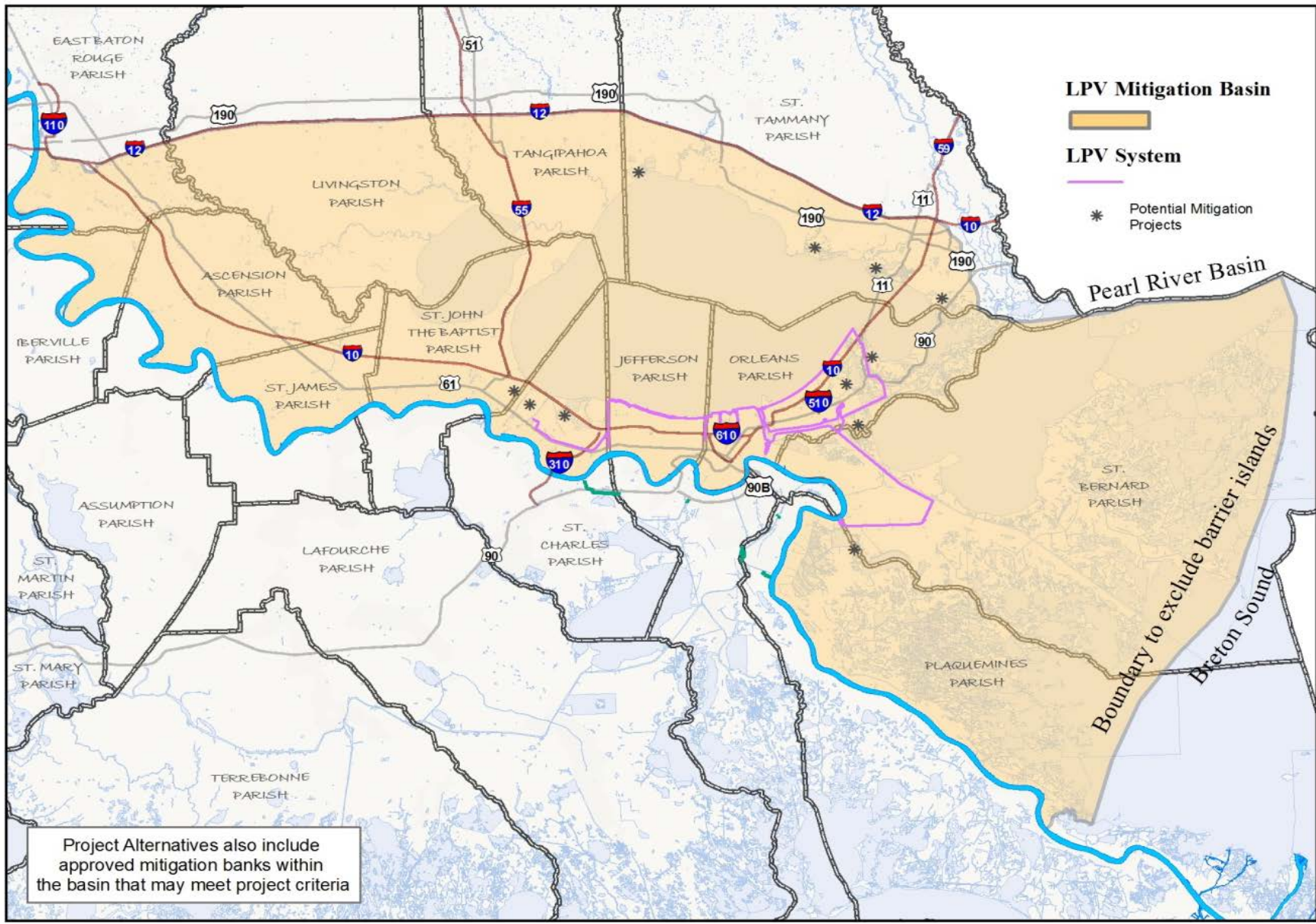


Figure 2: LPV Mitigation Basin



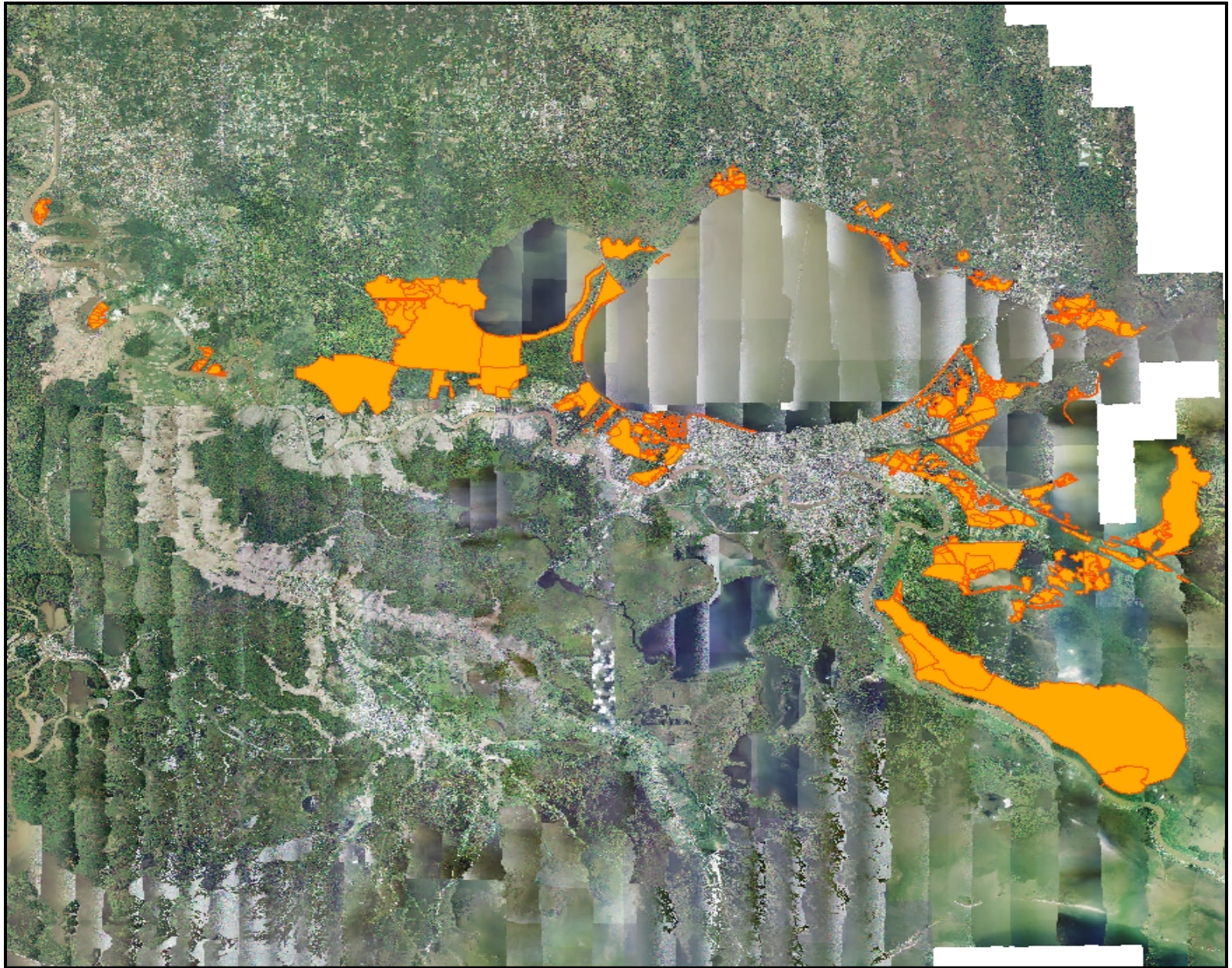
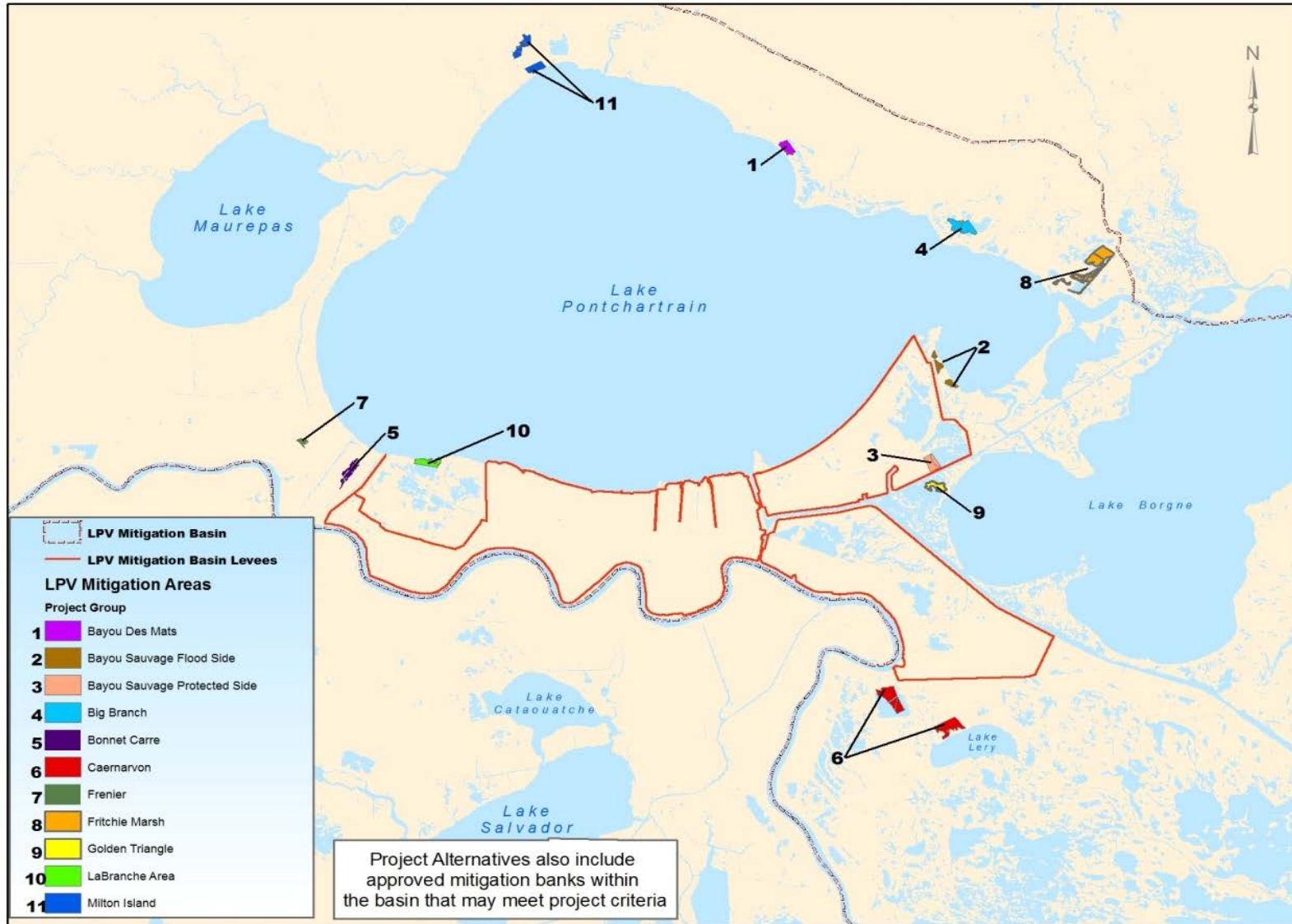


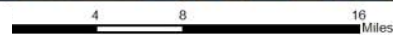
Figure 3: LPV HSDRRS Mitigation Projects Initially Considered (Mitigation banks not shown)



# LPV Mitigation Project Areas



<sup>a</sup>Note: Some groups contain alternatives for multiple habitat types.



As of 13 Mar 2012

Figure 4: LPV HSDRRS Mitigation Initial Screening Results (Final Array)



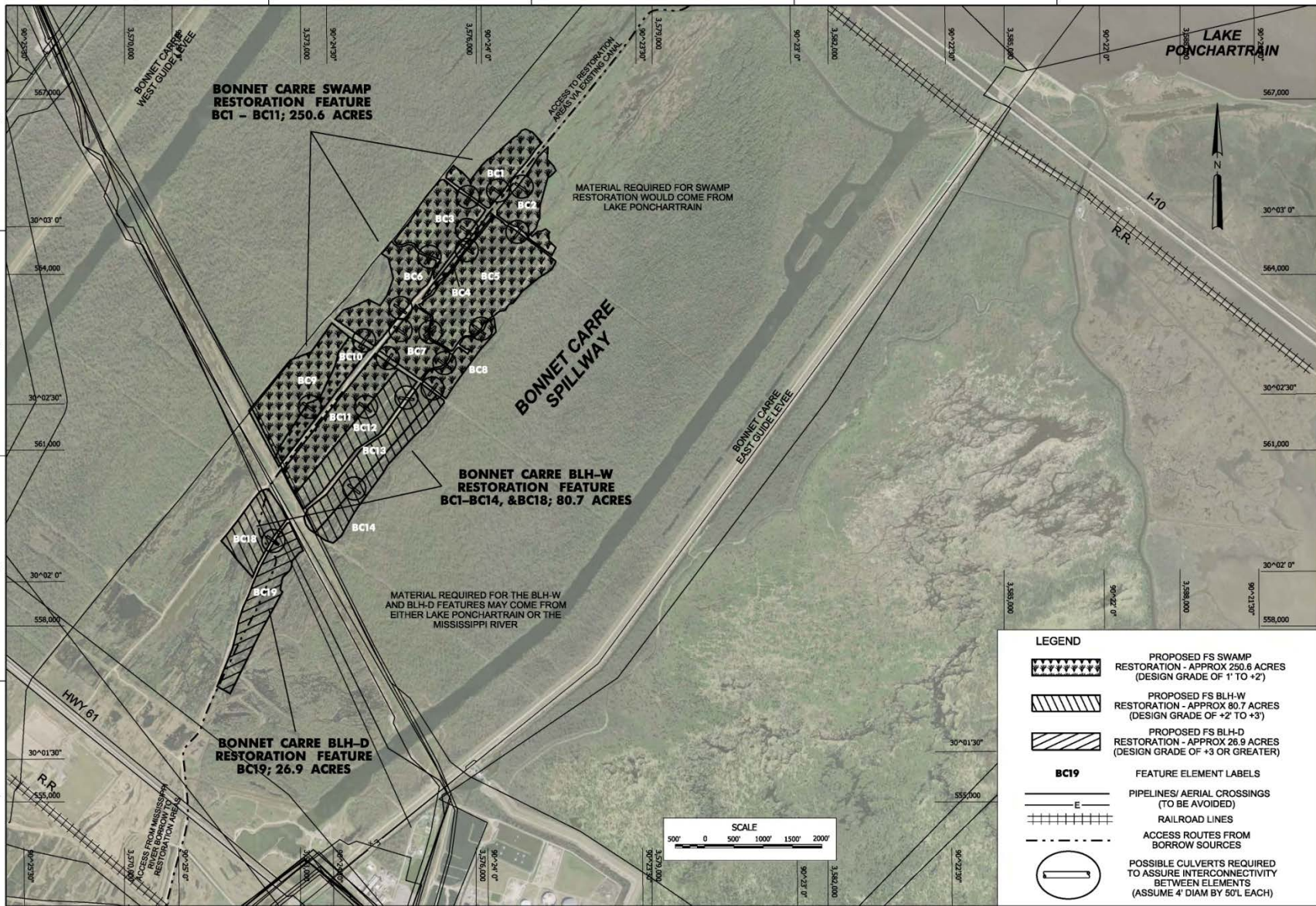


Figure 5: Bonnet Carre BLH-Dry/Wet and Swamp Projects



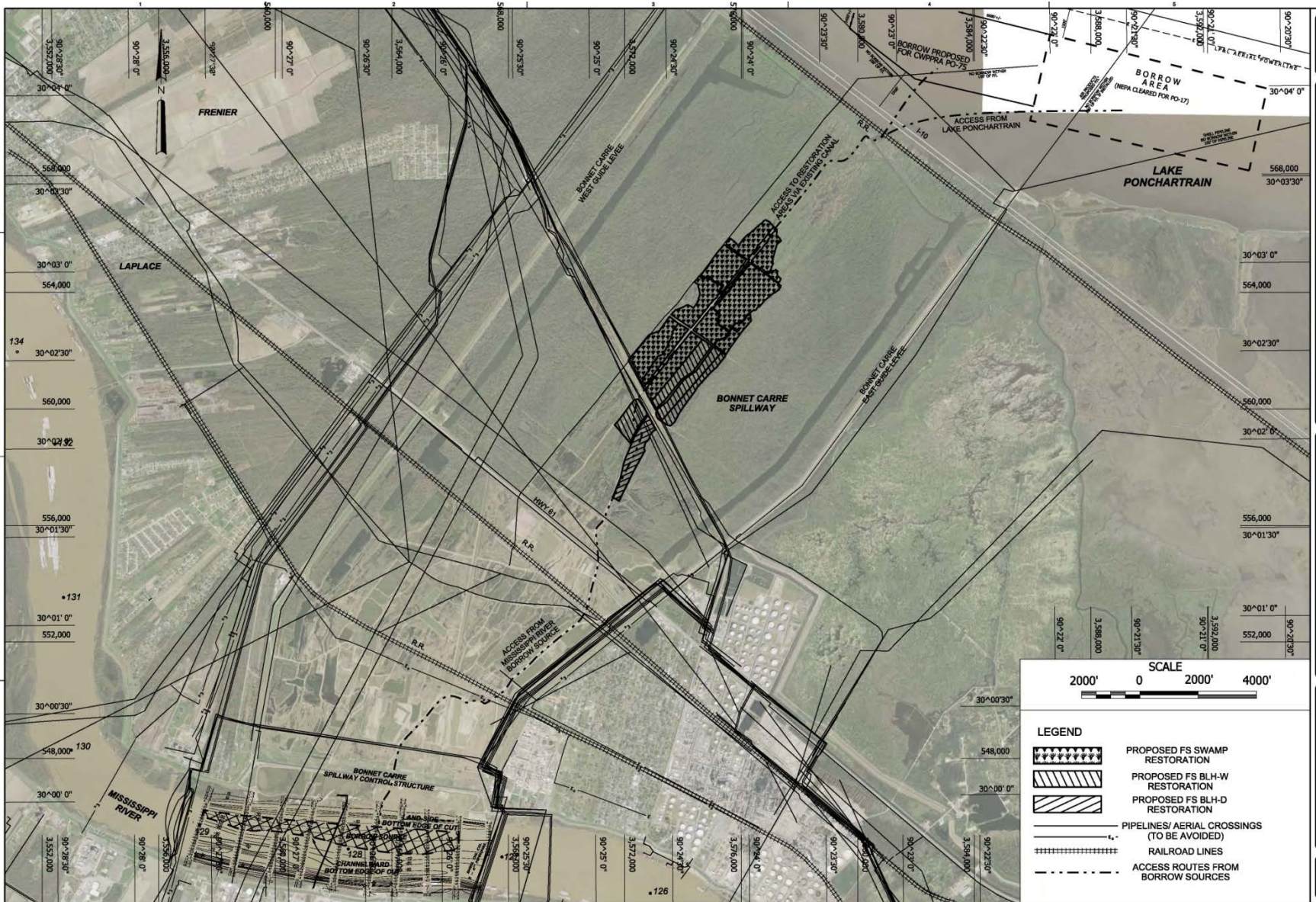


Figure 6: Bonnet Carre Potential Borrow Sources



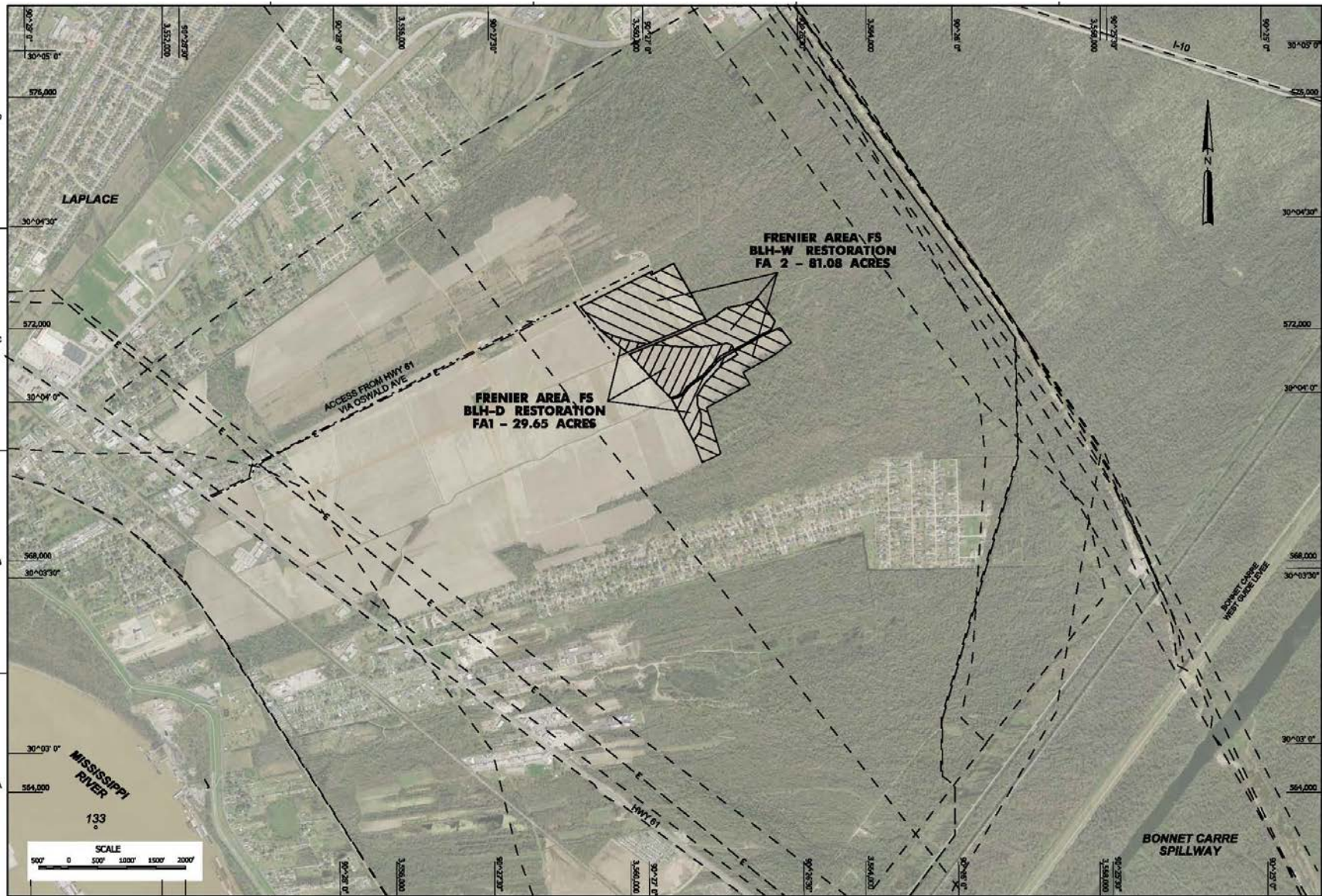


Figure 7: Frenier BLH-Dry and BLH-Wet Projects



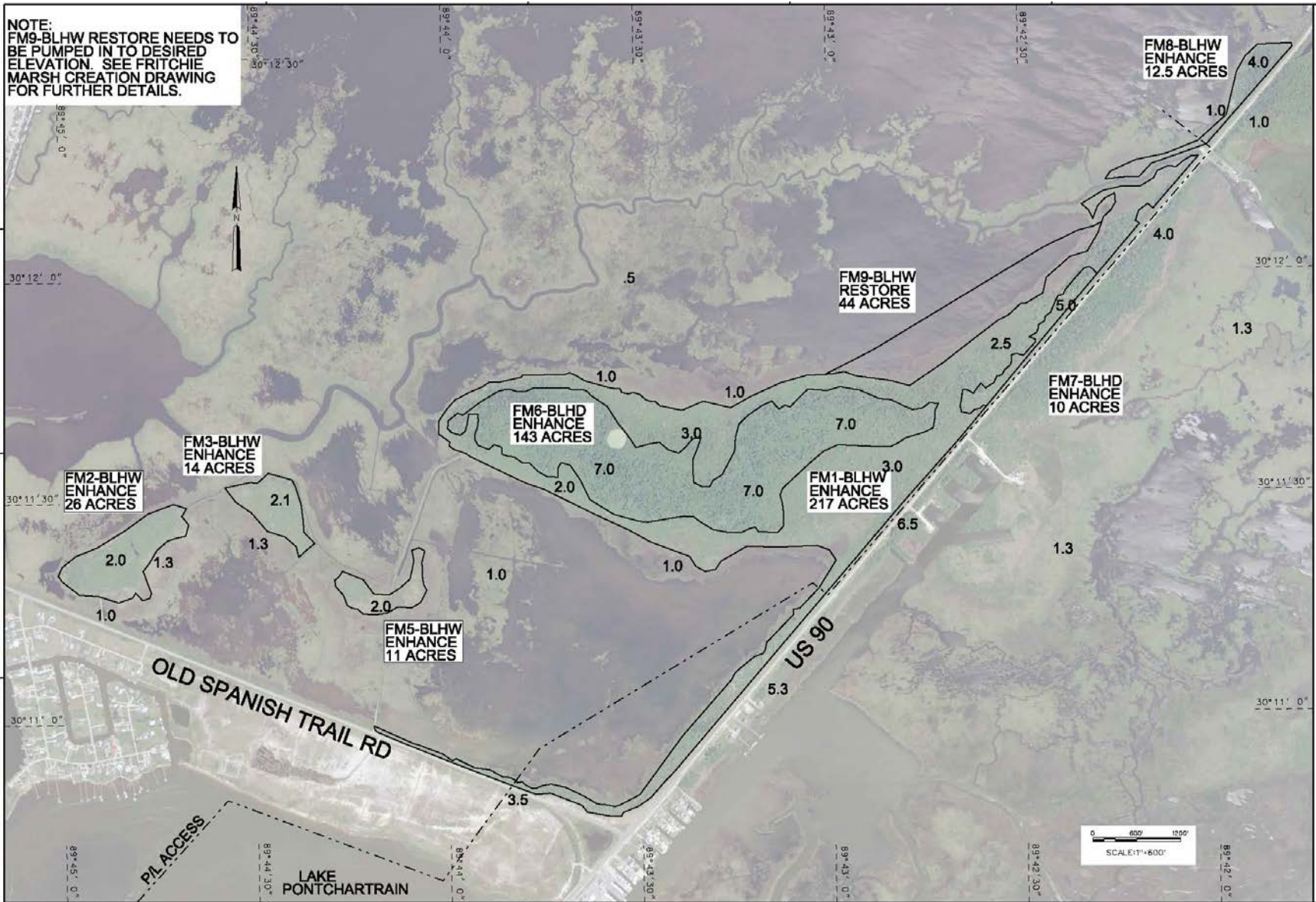


Figure 8: Fritchie BLH-Dry and BLH-Wet Enhancement and BLH-Wet Restoration



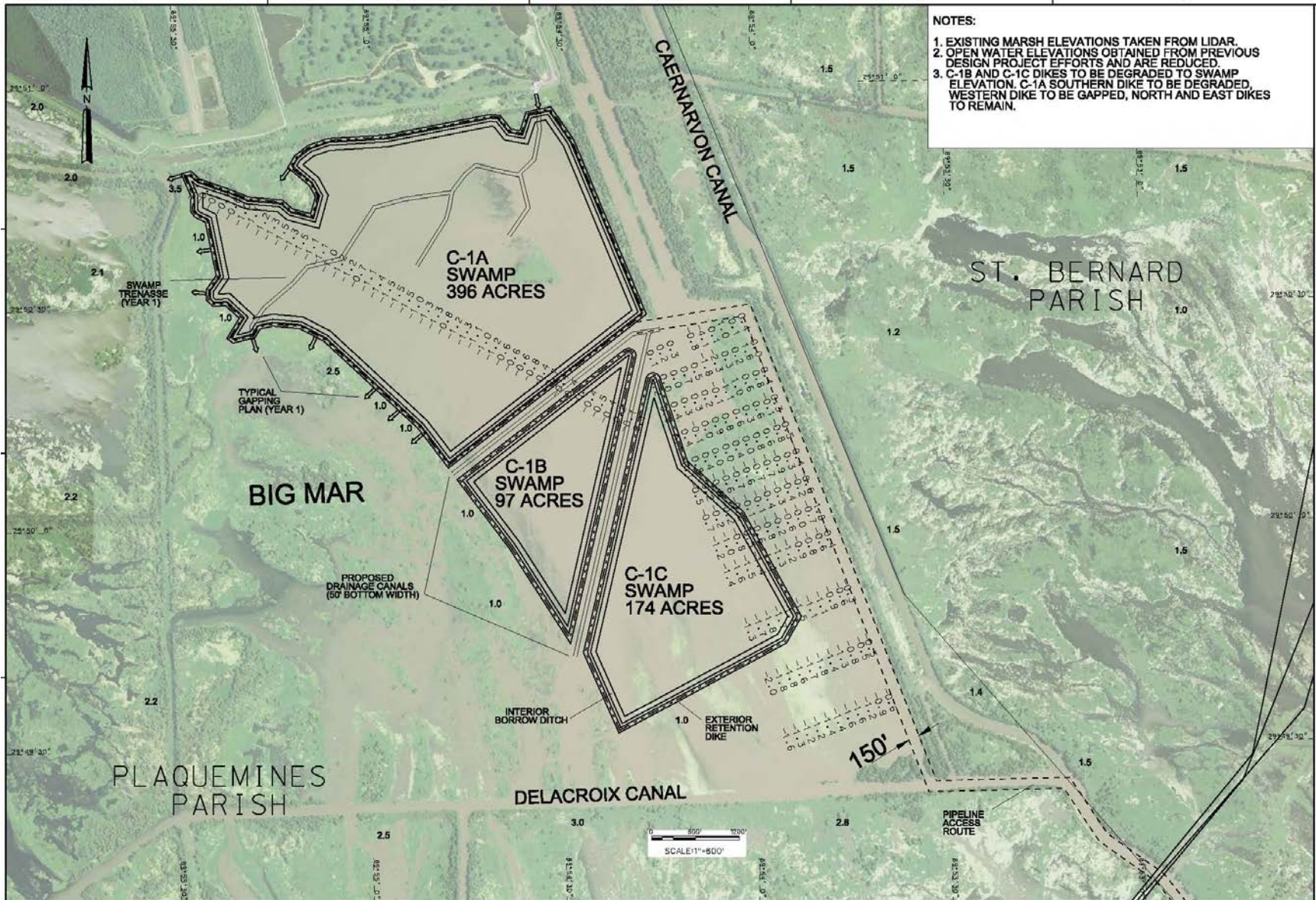


Figure 9: Caernarvon Swamp Restoration



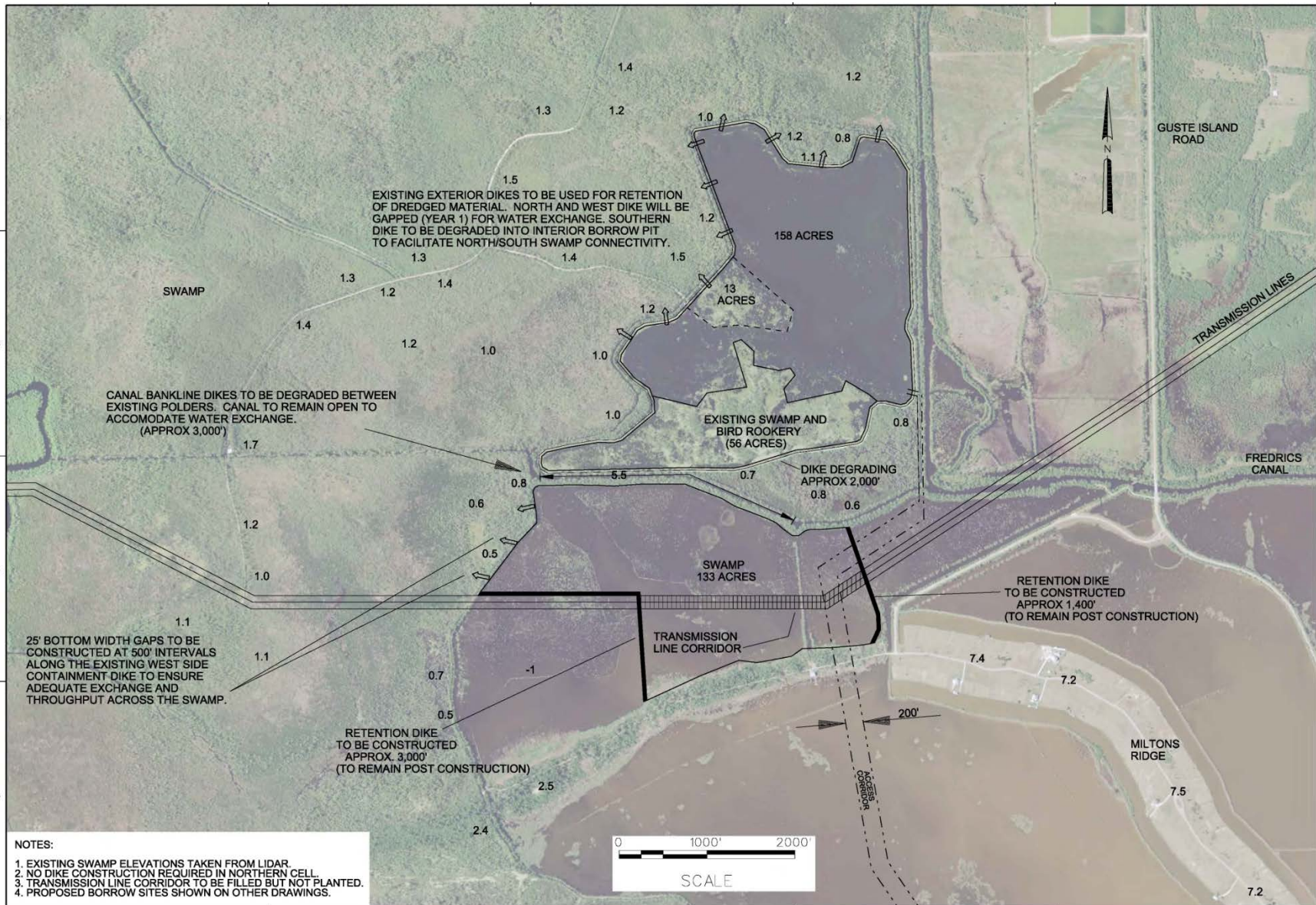


Figure 10: Milton Island Swamp Restoration



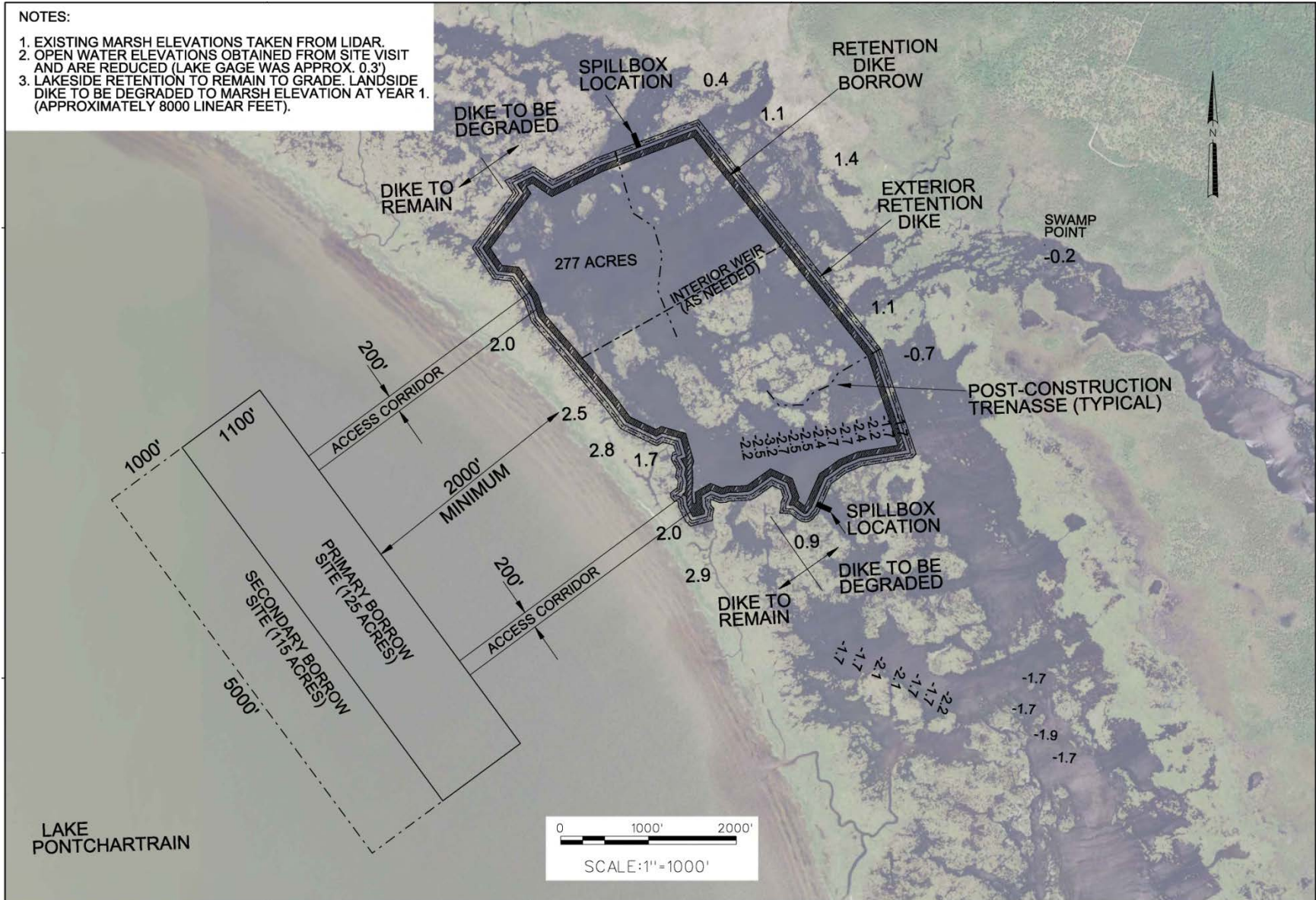


Figure 11: Bayou Des Mats Intermediate Marsh Restoration



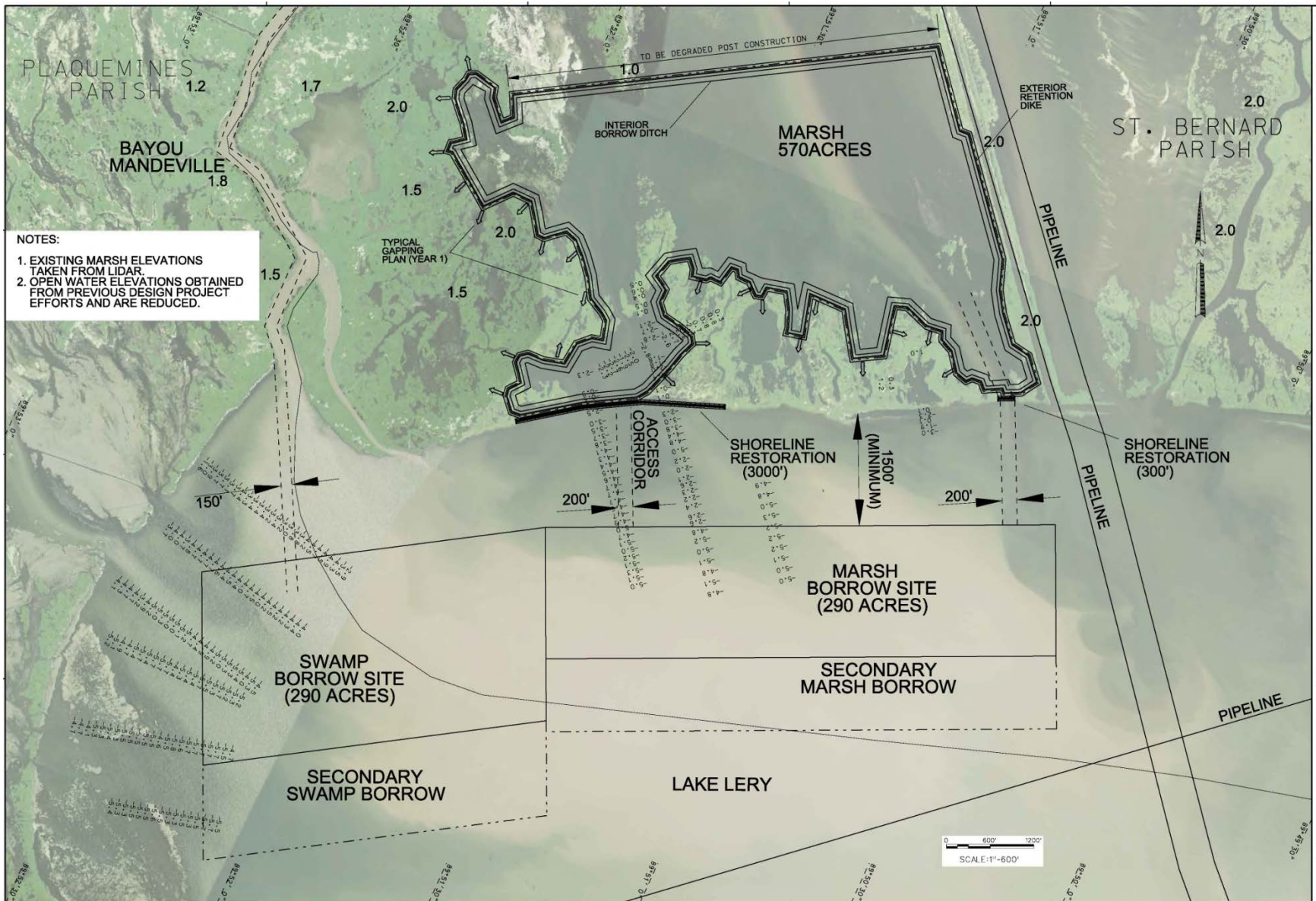


Figure 12: Caernarvon Intermediate Marsh Restoration



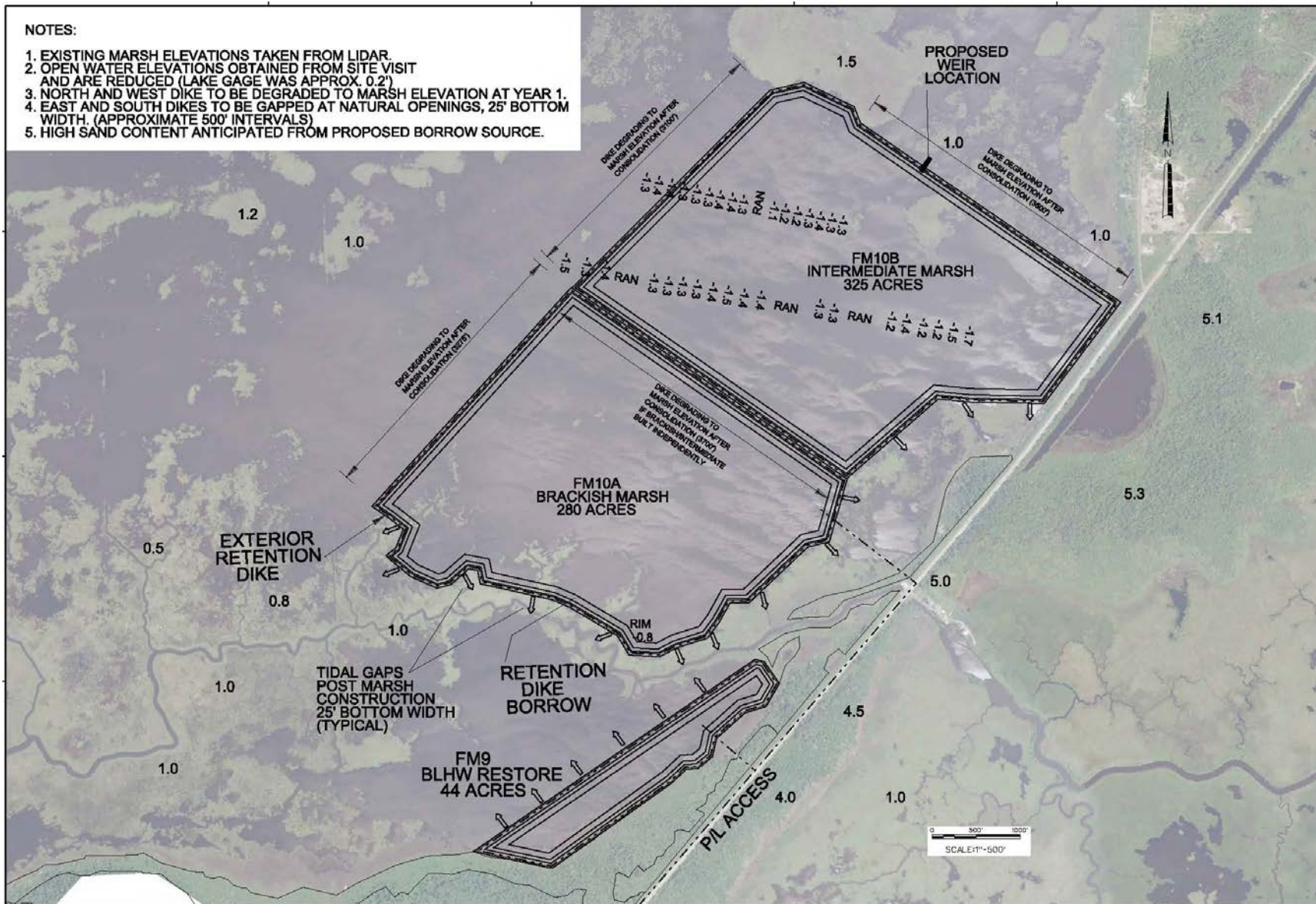


Figure 13: Fritchie BLH-Wet Restoration and Intermediate and Brackish Marsh Restoration Projects



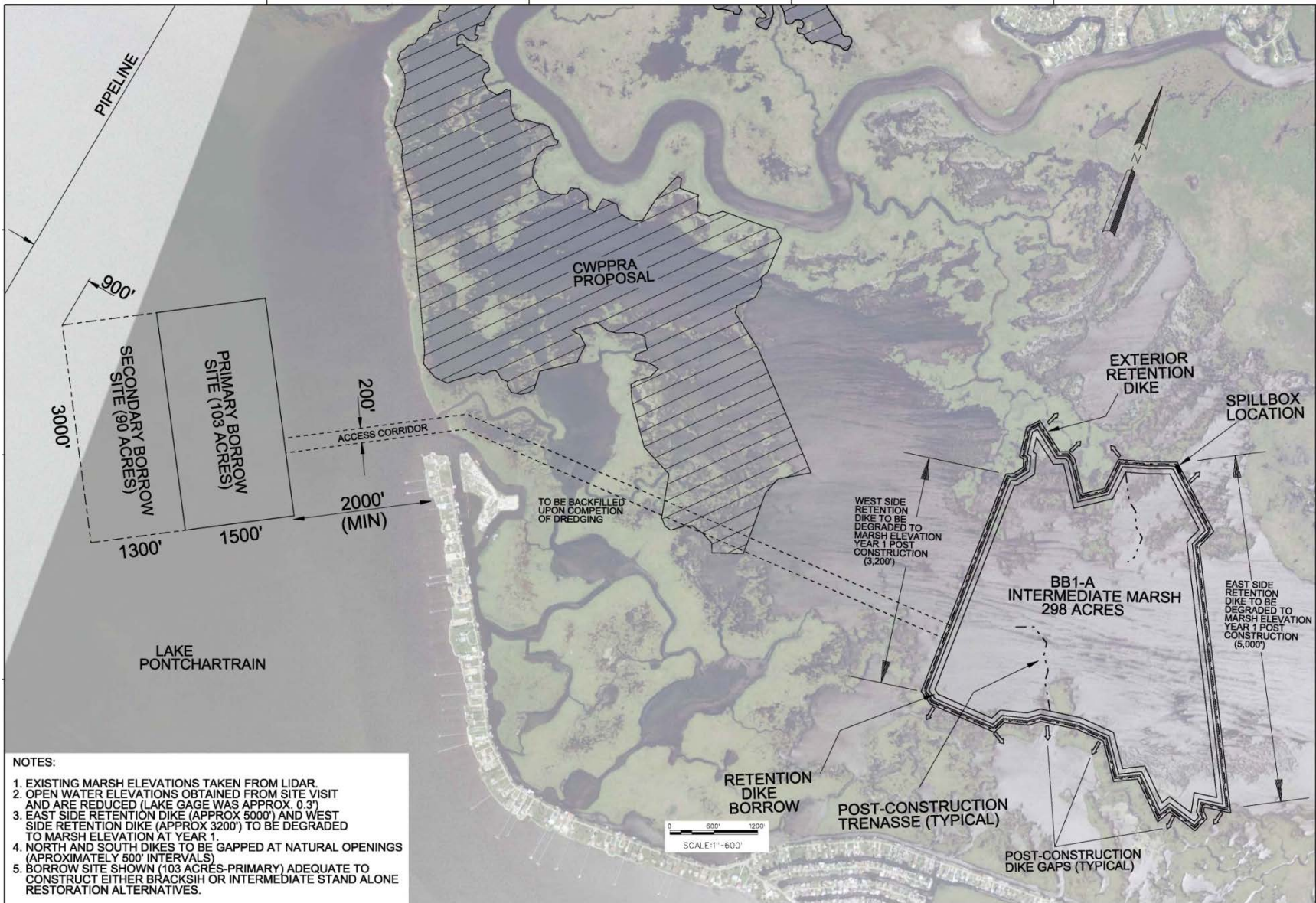


Figure 14: Big Branch Intermediate Marsh Restoration



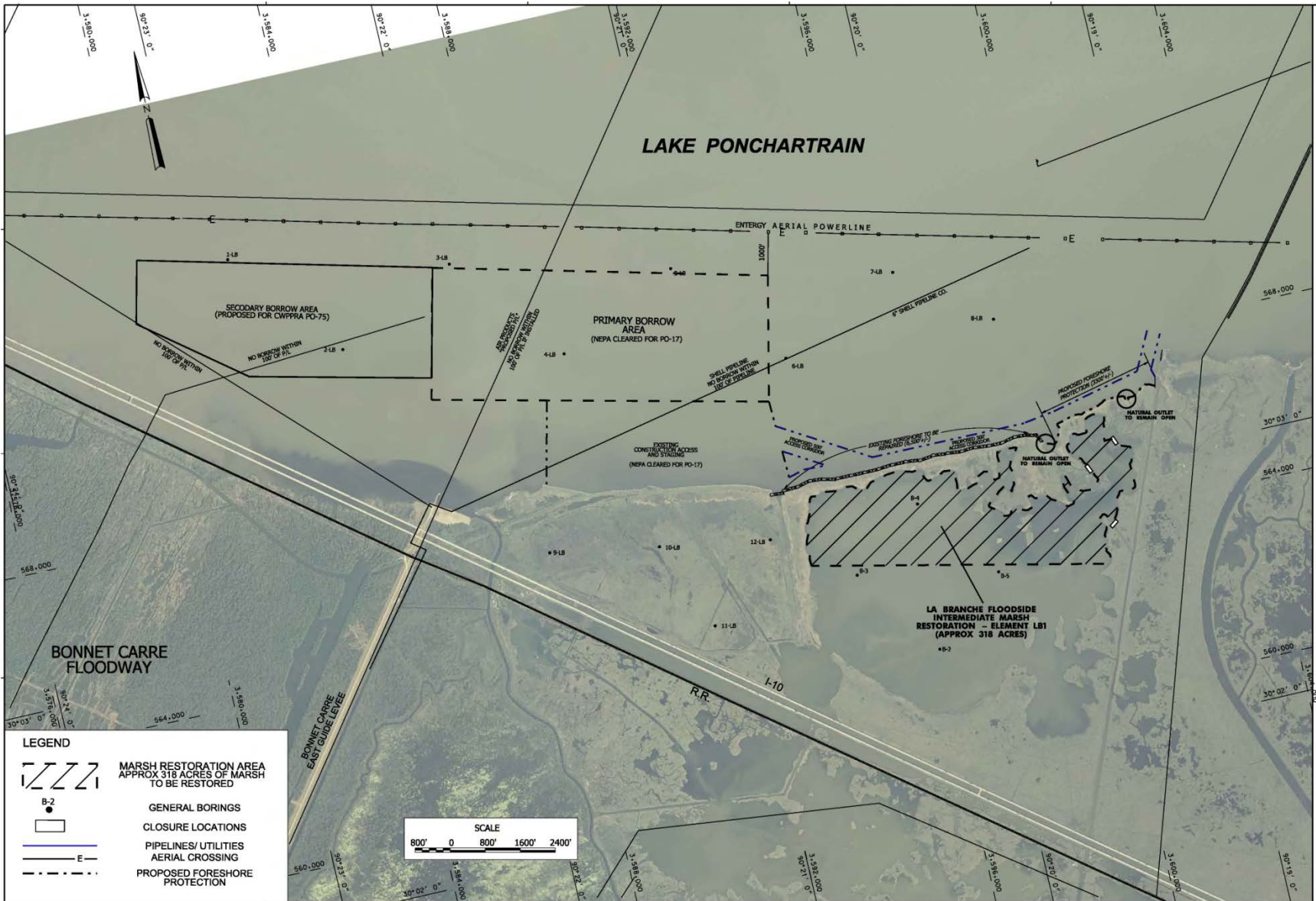


Figure 15: LaBranche Intermediate Marsh Restoration



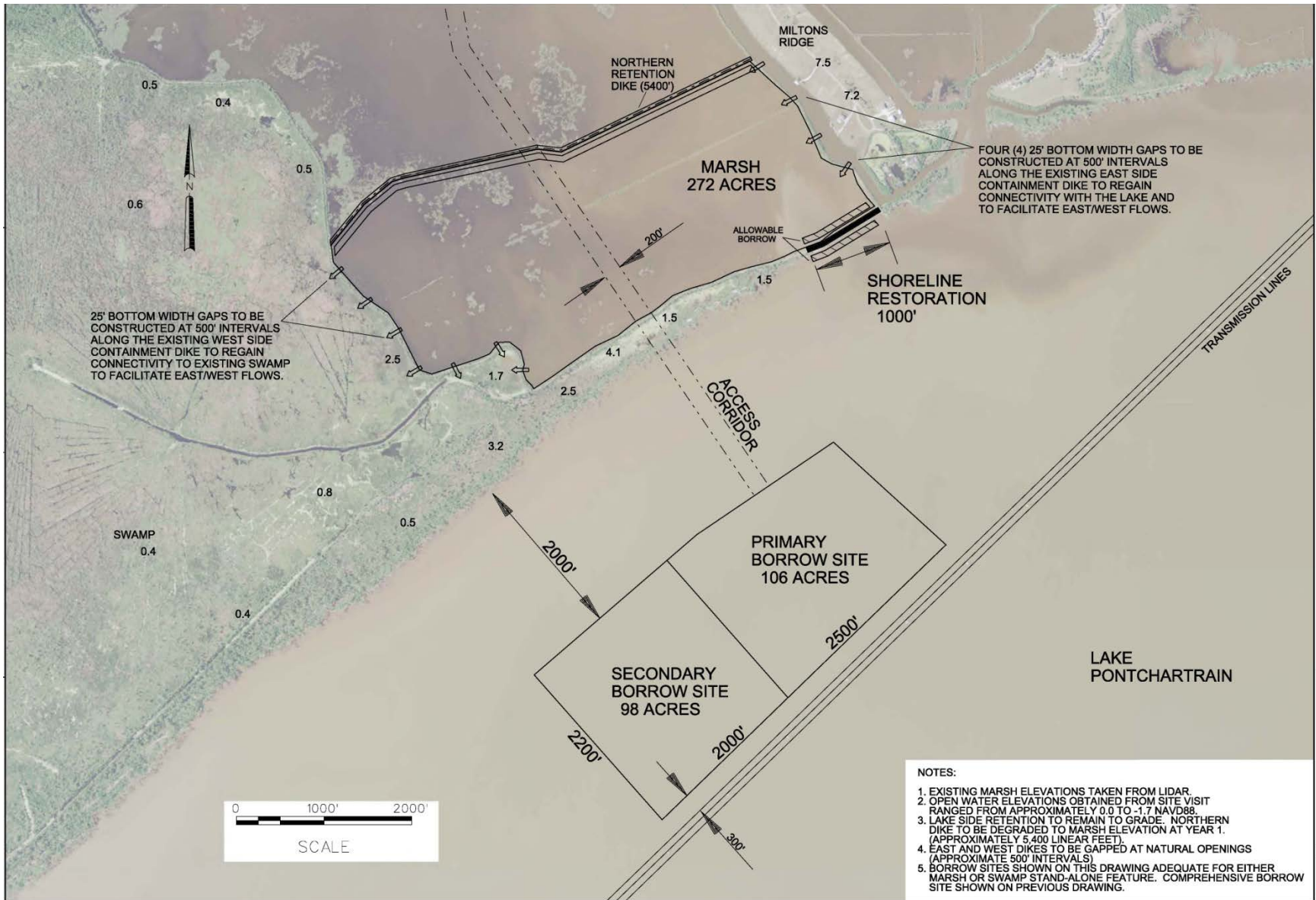


Figure 16: Milton Island Intermediate Marsh Restoration



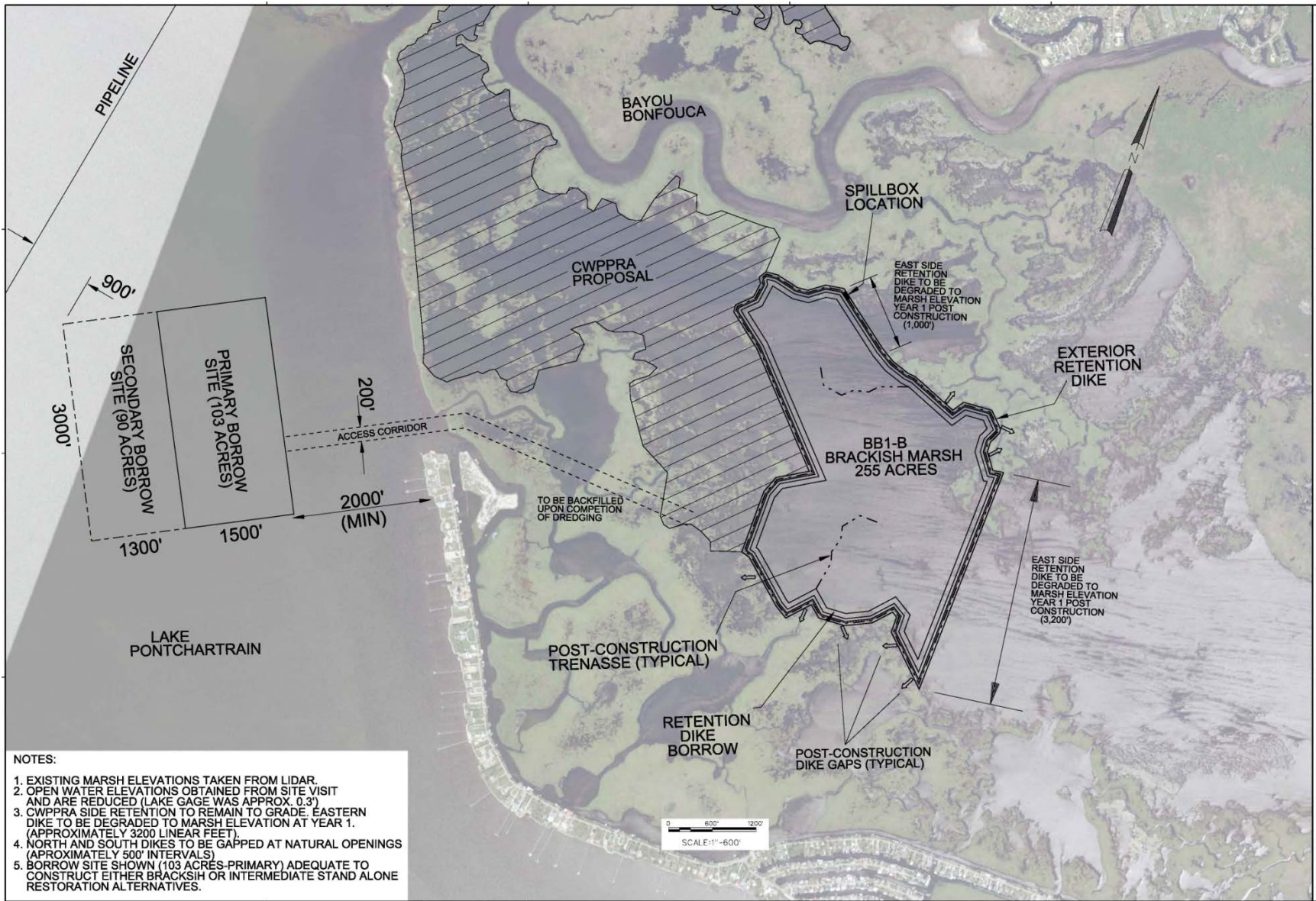


Figure 17: Big Branch Brackish Marsh Restoration



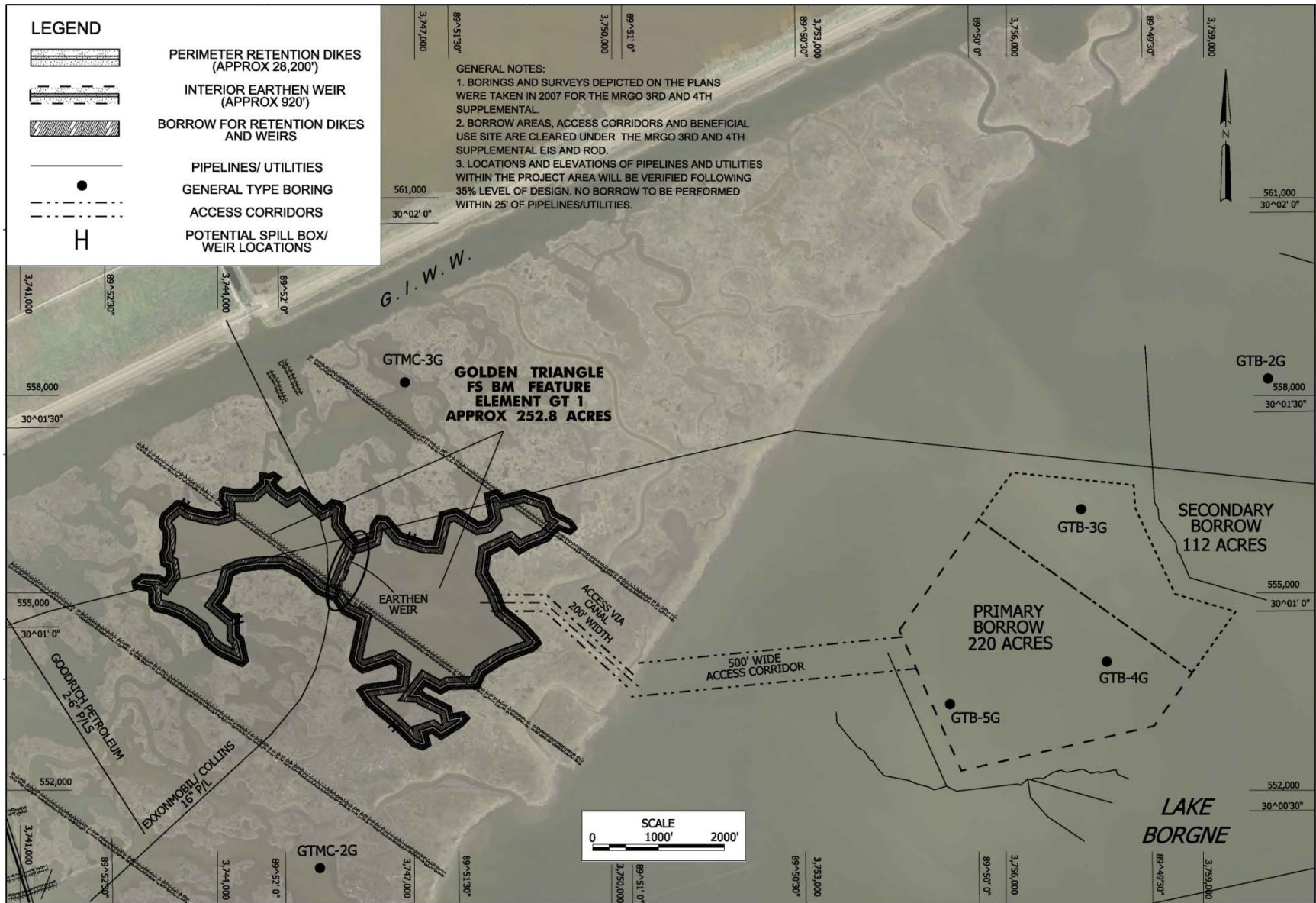


Figure 18: Golden Triangle Brackish Marsh Restoration



**NOTES:**

1. EXISTING MARSH ELEVATIONS TAKEN FROM LIDAR.
2. OPEN WATER ELEVATIONS OBTAINED FROM SITE VISIT AND ARE REDUCED (LAKE GAGE WAS APPROX. 0.1')
3. LAKESIDE RETENTION TO REMAIN TO GRADE. LANDSIDE DIKE TO BE GAPPED APPROX EVERY 500' IN YEAR 1 (25' BOTTOM WIDTHS, TO MINIMUM MARSH ELEVATION), EXCEPT FOR INTERIOR SHORELINE RESTORATION REACH.

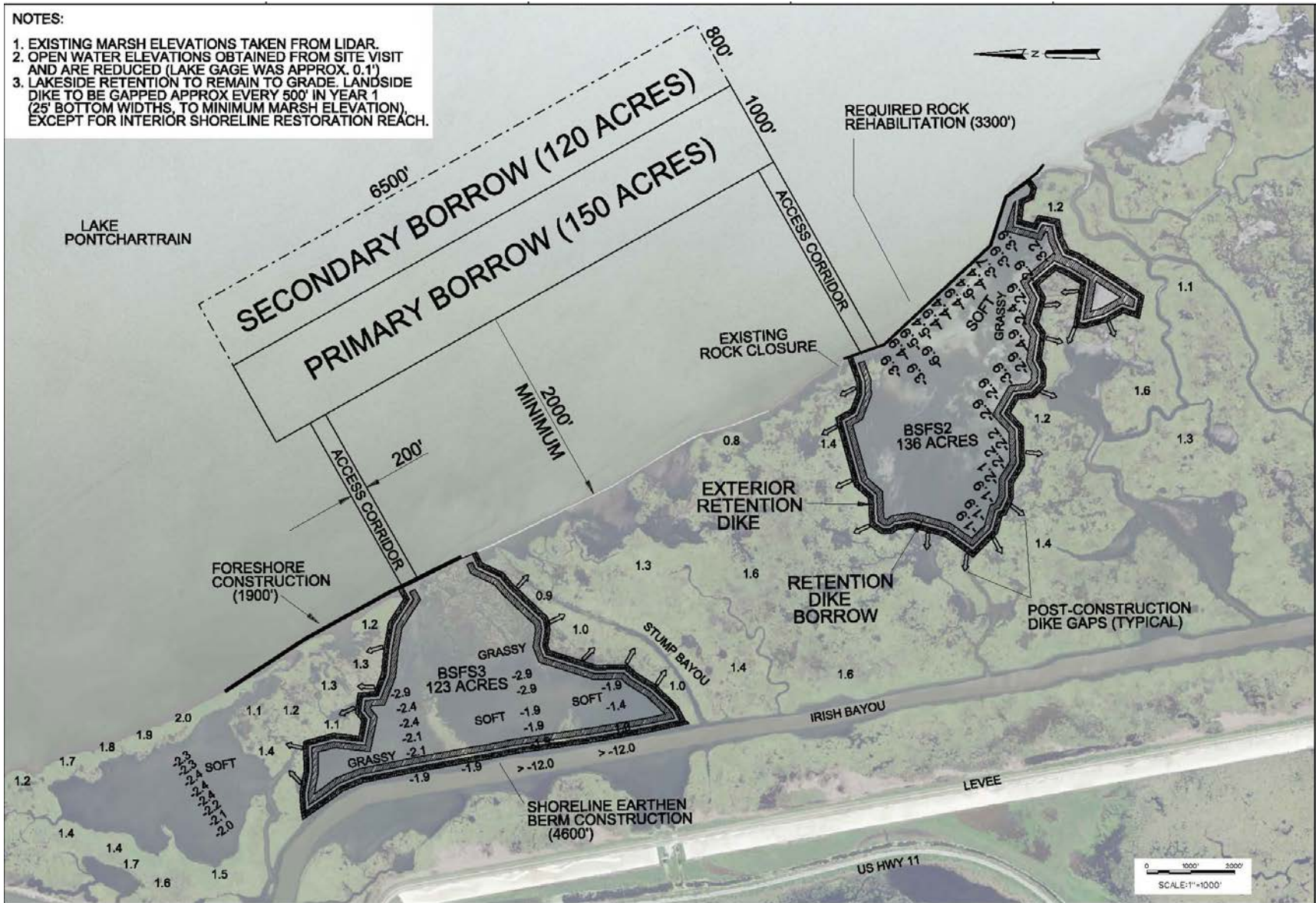


Figure 19: Bayou Sauvage Flood Side Brackish Marsh Restoration



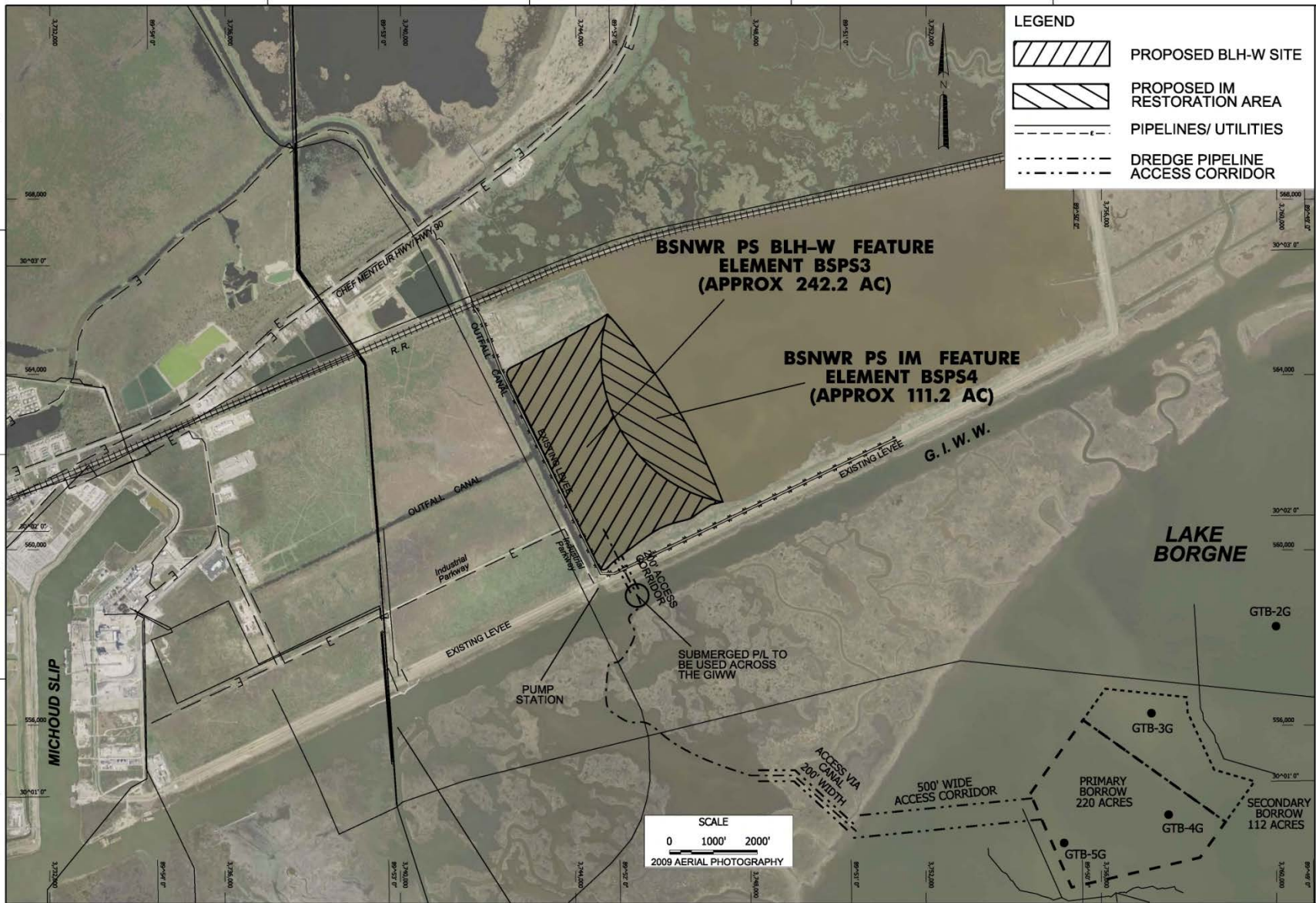


Figure 20: Bayou Sauvage Protected Side BLH-Wet and Intermediate Marsh Restoration Projects



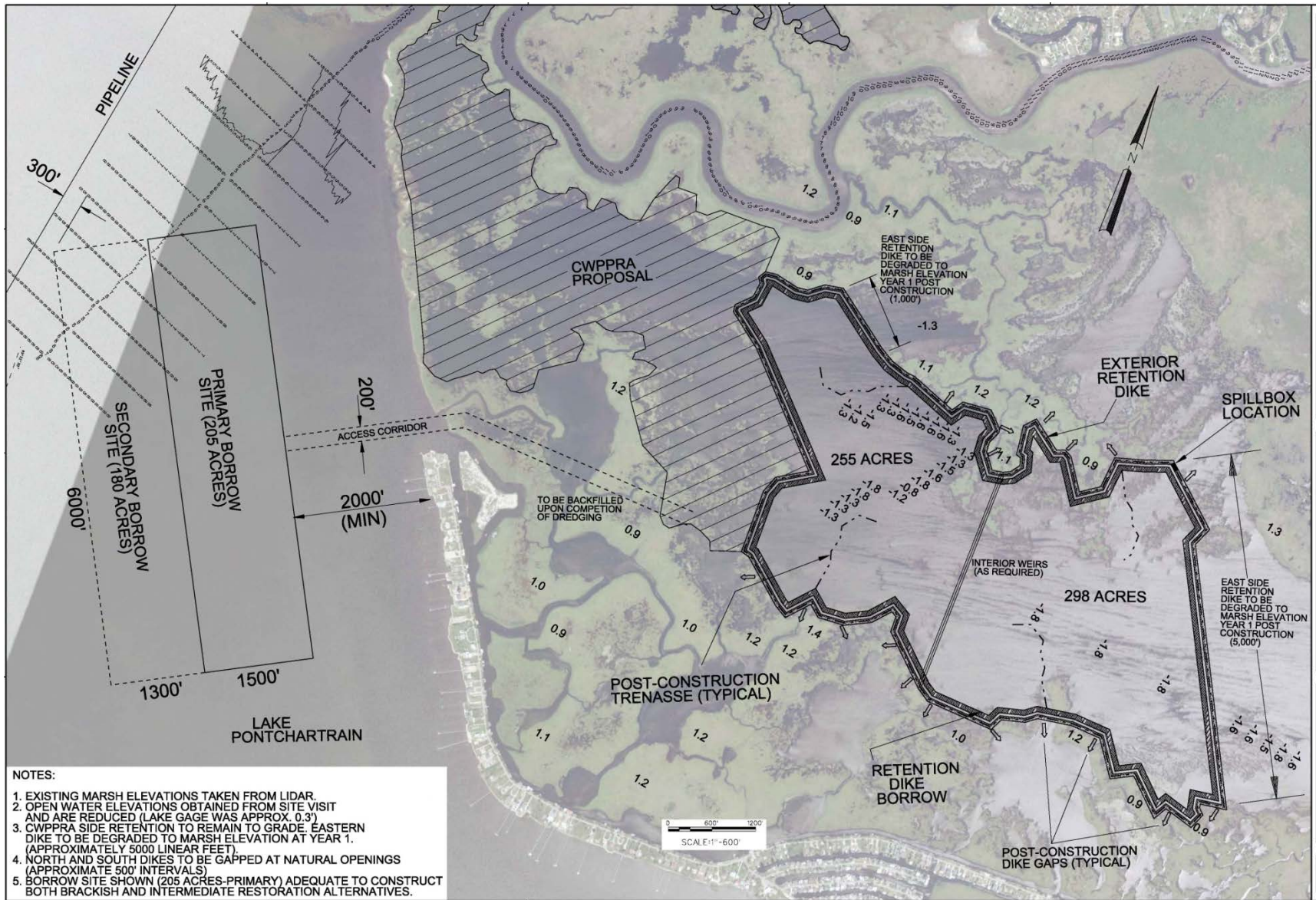


Figure 21: Big Branch Intermediate and Brackish Marsh Restoration Projects



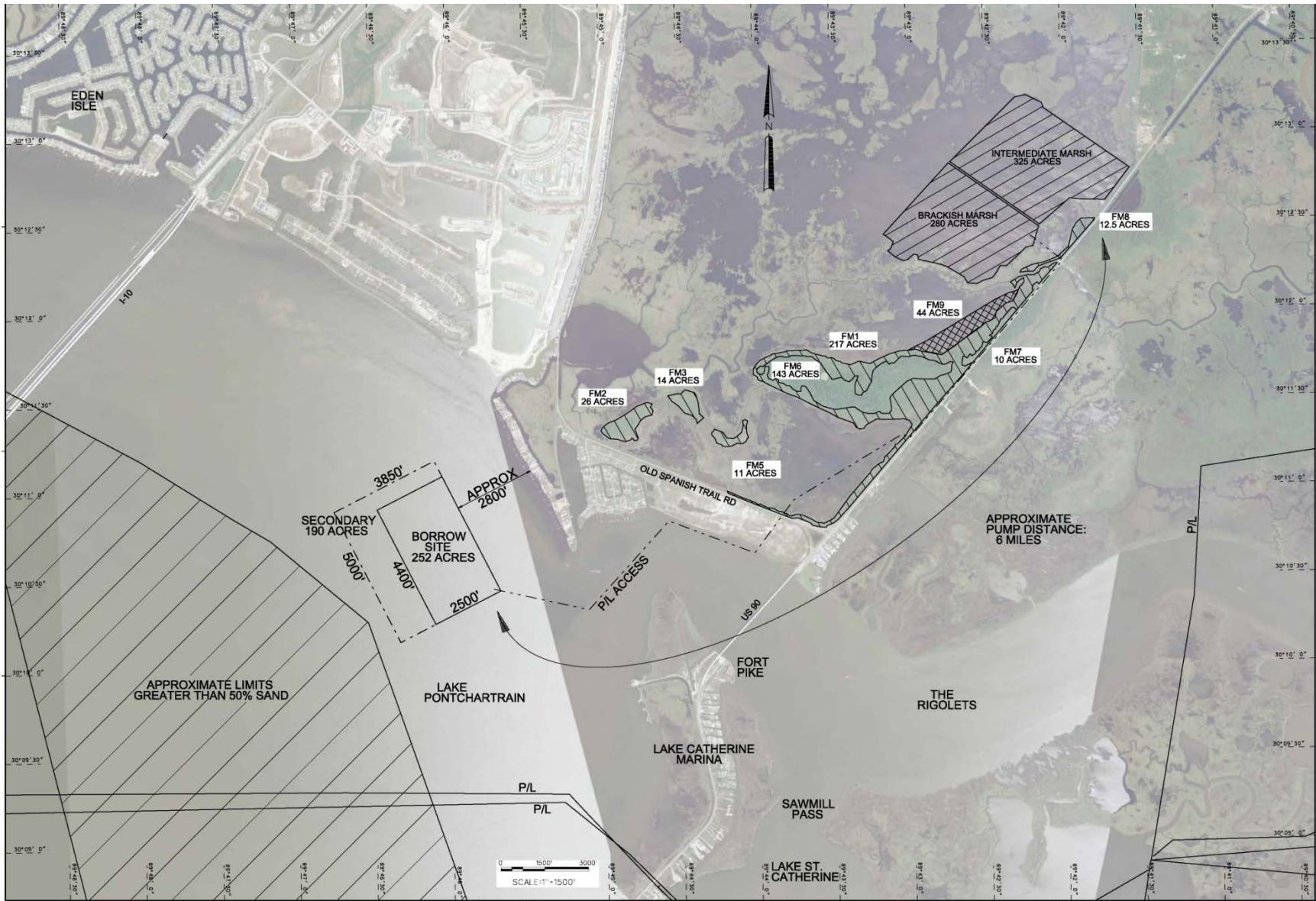


Figure 22: Fritchie Enhancement and Restoration



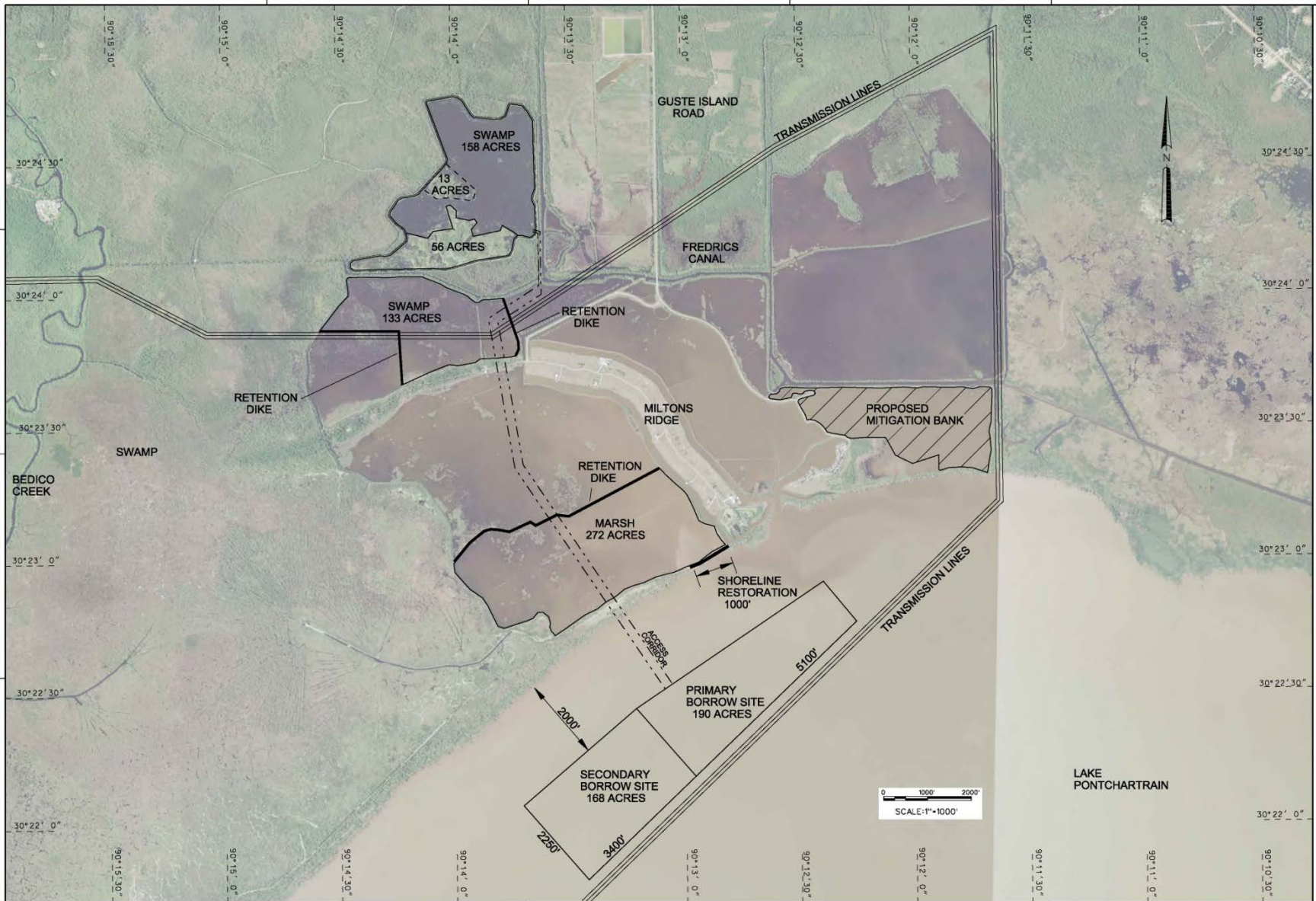


Figure 23: Milton Restoration Projects



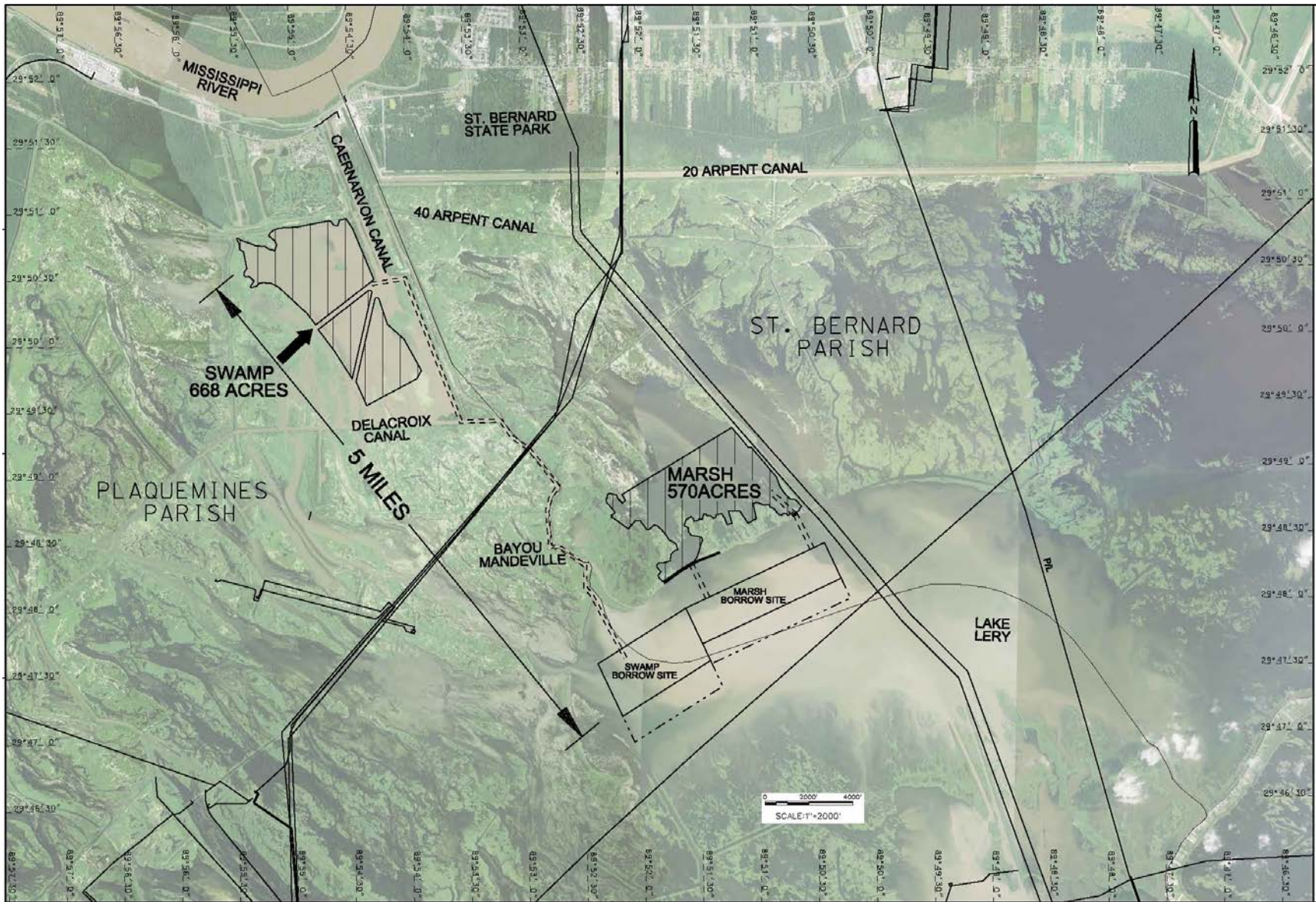


Figure 24: Caernarvon Restoration Projects





# LPV HSDRRS Mitigation Projects



Figure 25: LPV HSDRRS Mitigation TSMF Projects



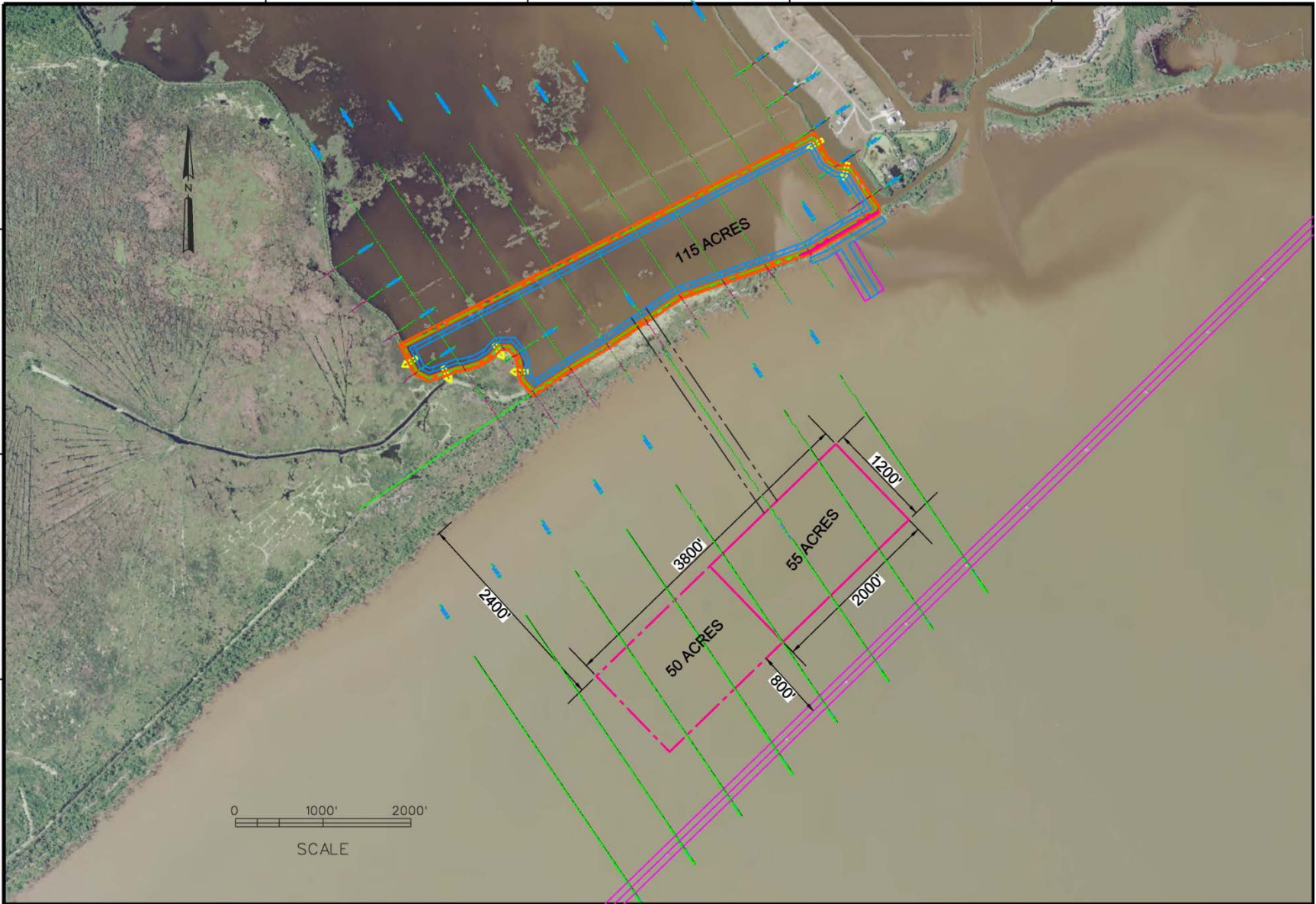


Figure 26: Milton Intermediate Marsh Restoration



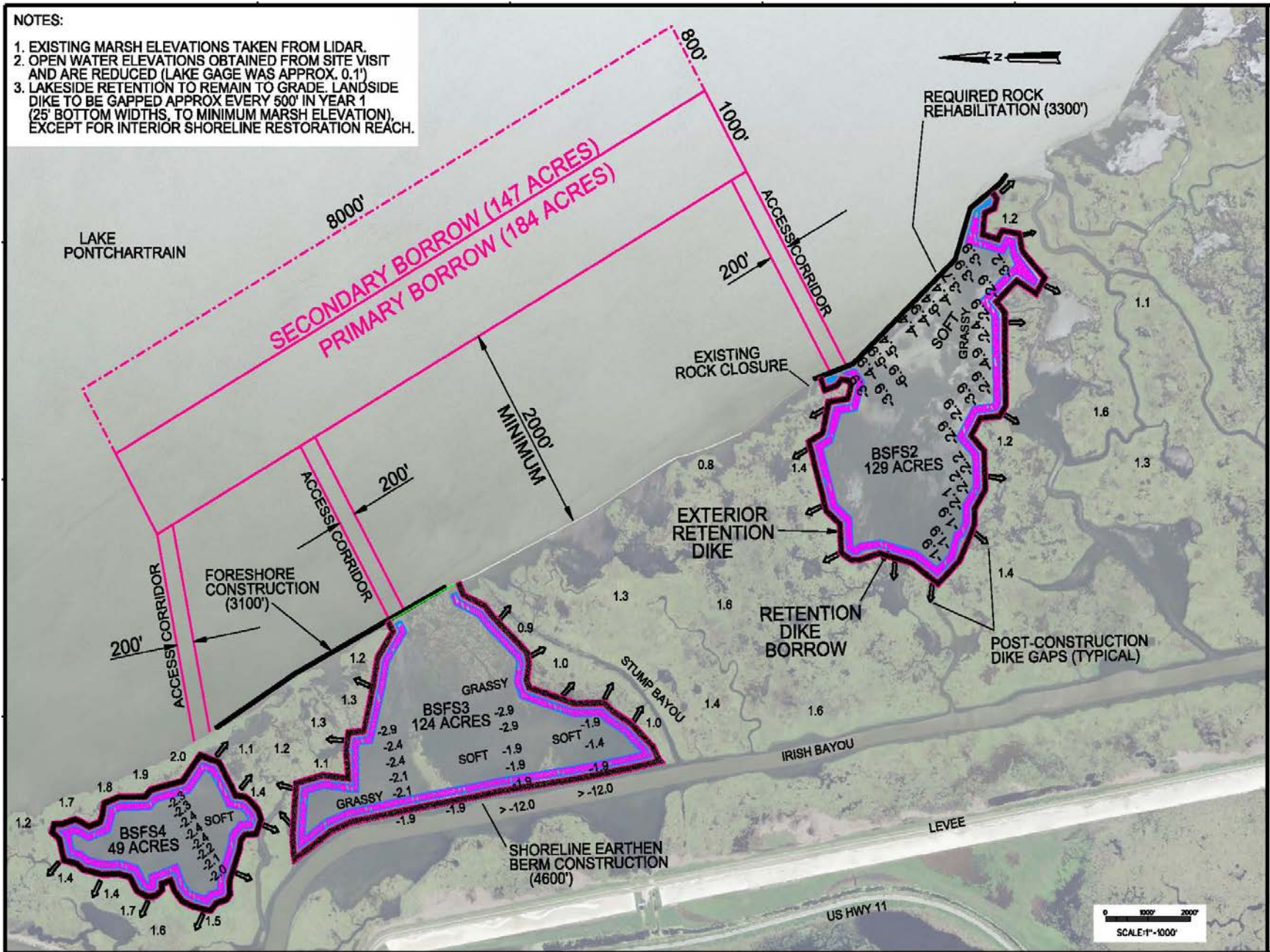


Figure 27: Bayou Sauvage Flood Side Brackish Marsh Restoration



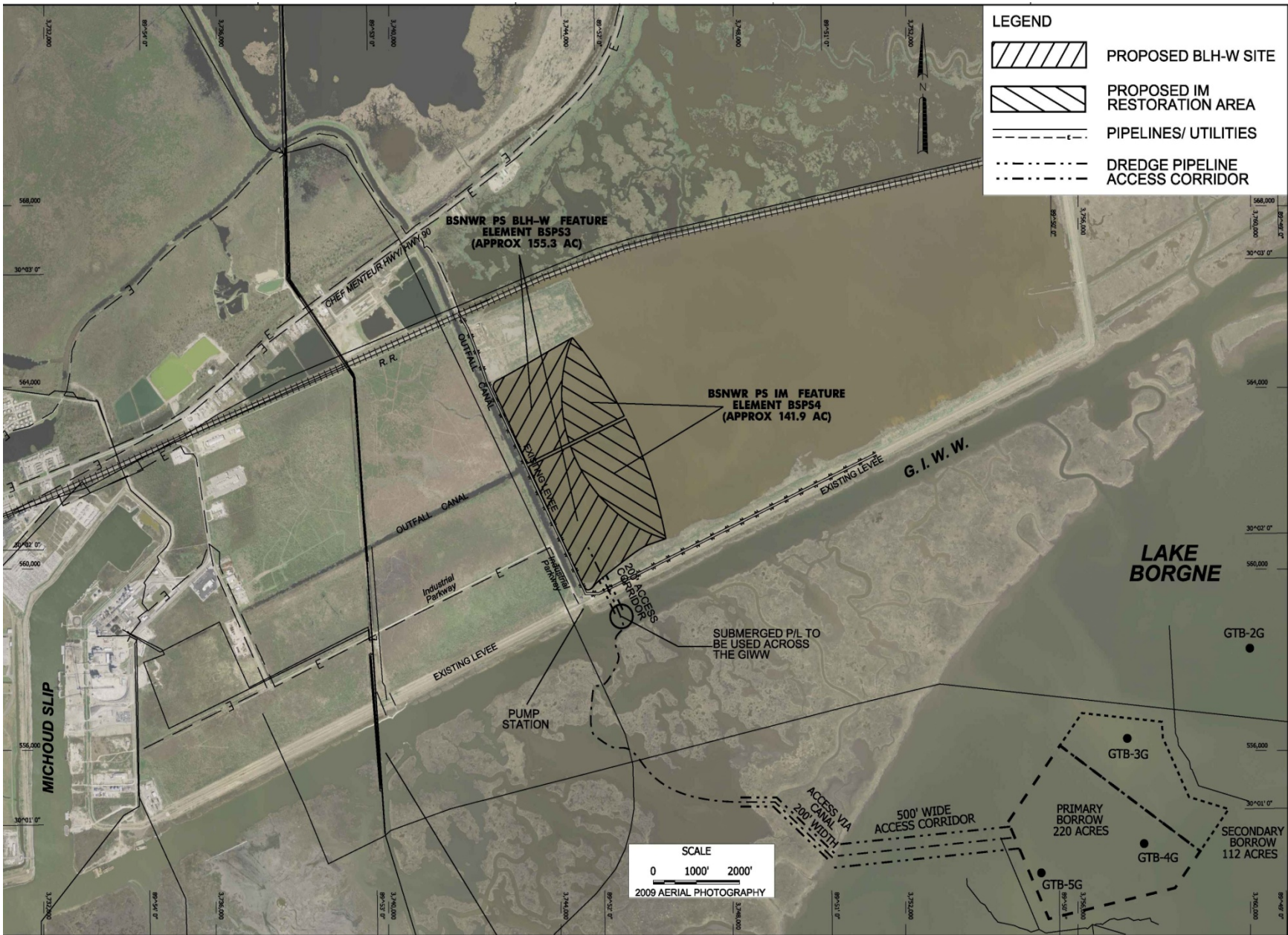


Figure 28: Bayou Sauvage Protected Side BLH-Wet and Intermediate Marsh Restoration



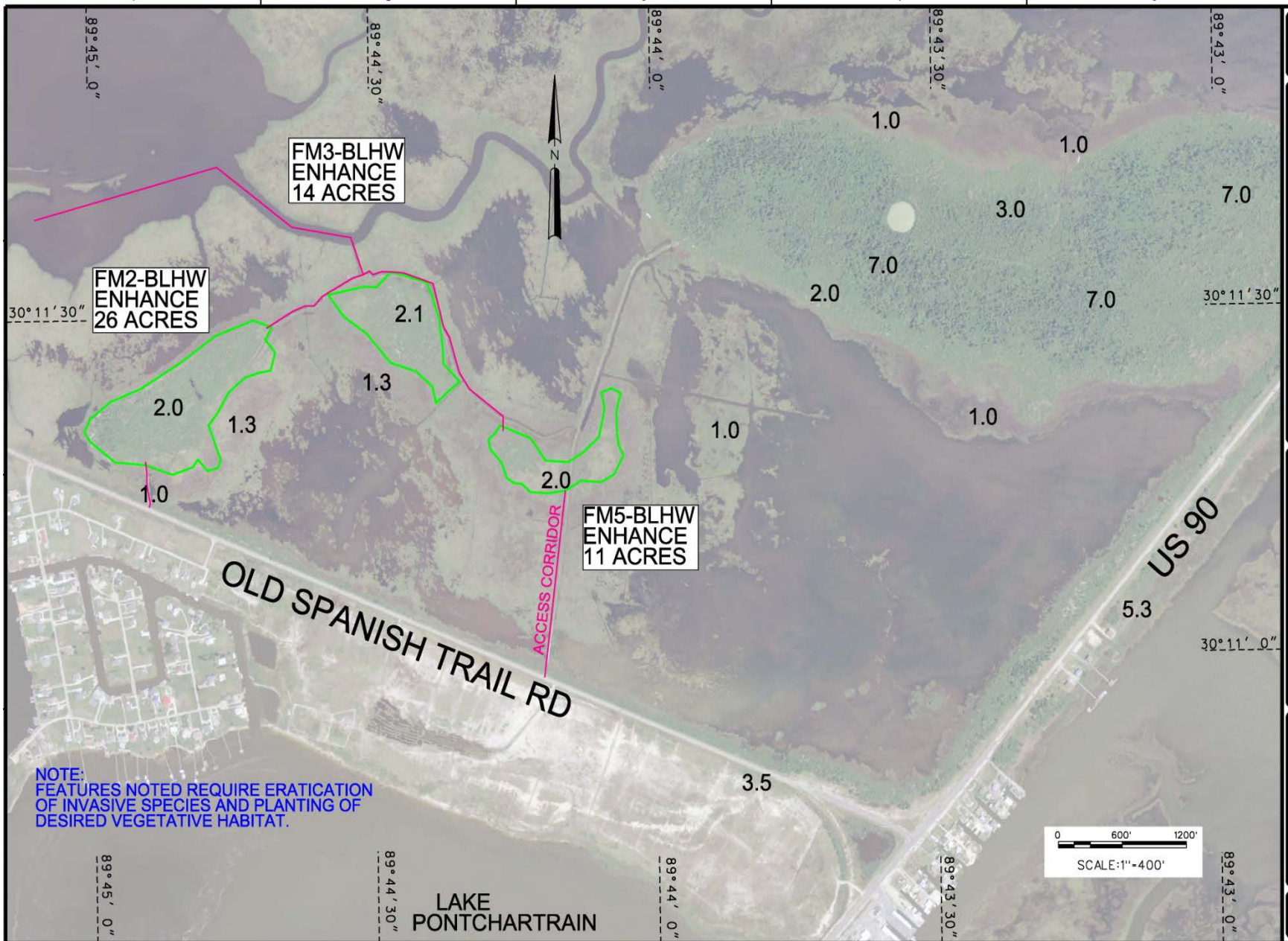


Figure 29: Fritchie BLH-Wet Enhancement



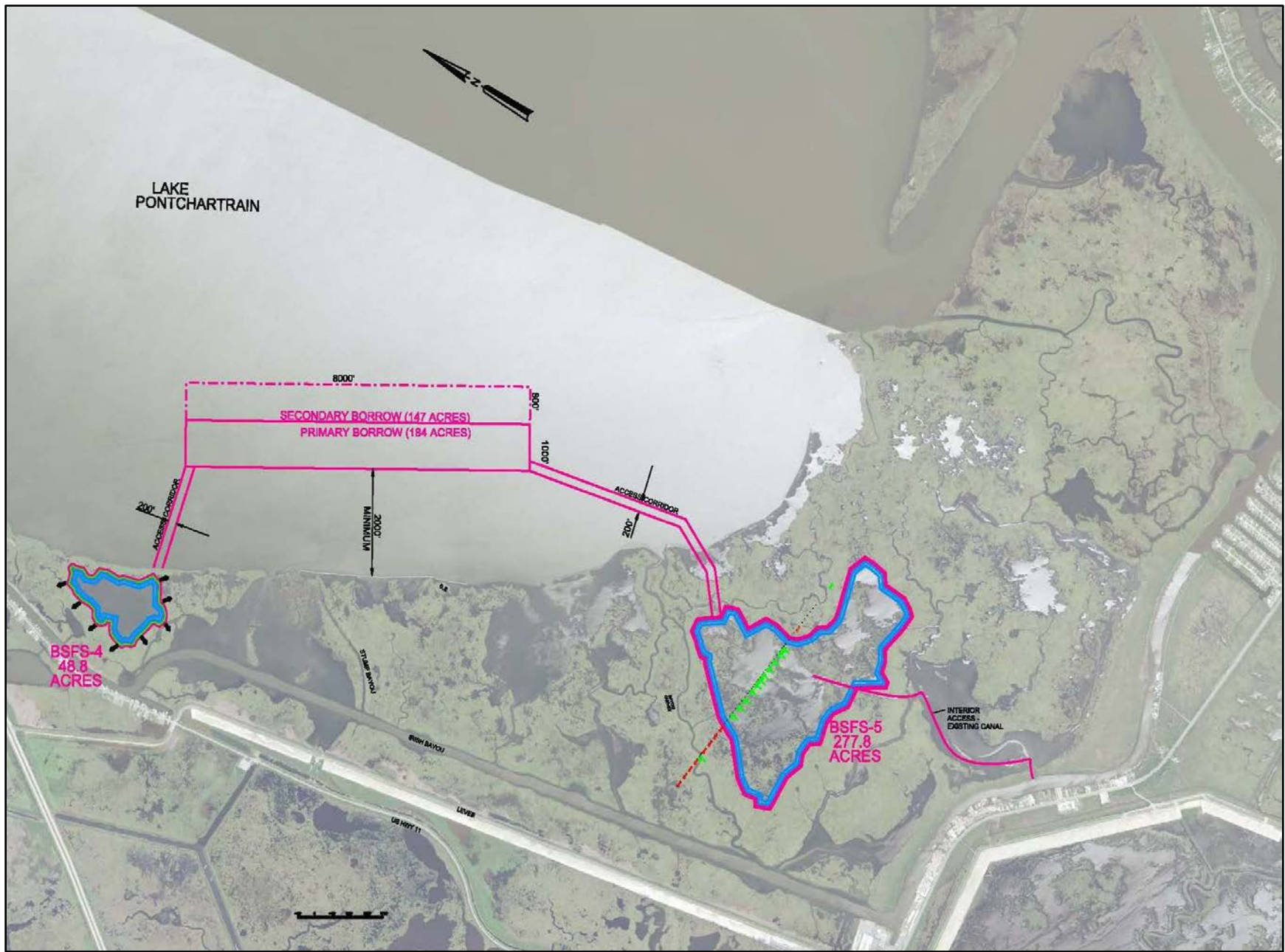


Figure 30: Bayou Sauvage Flood Side Brackish Marsh Restoration and Enhancement



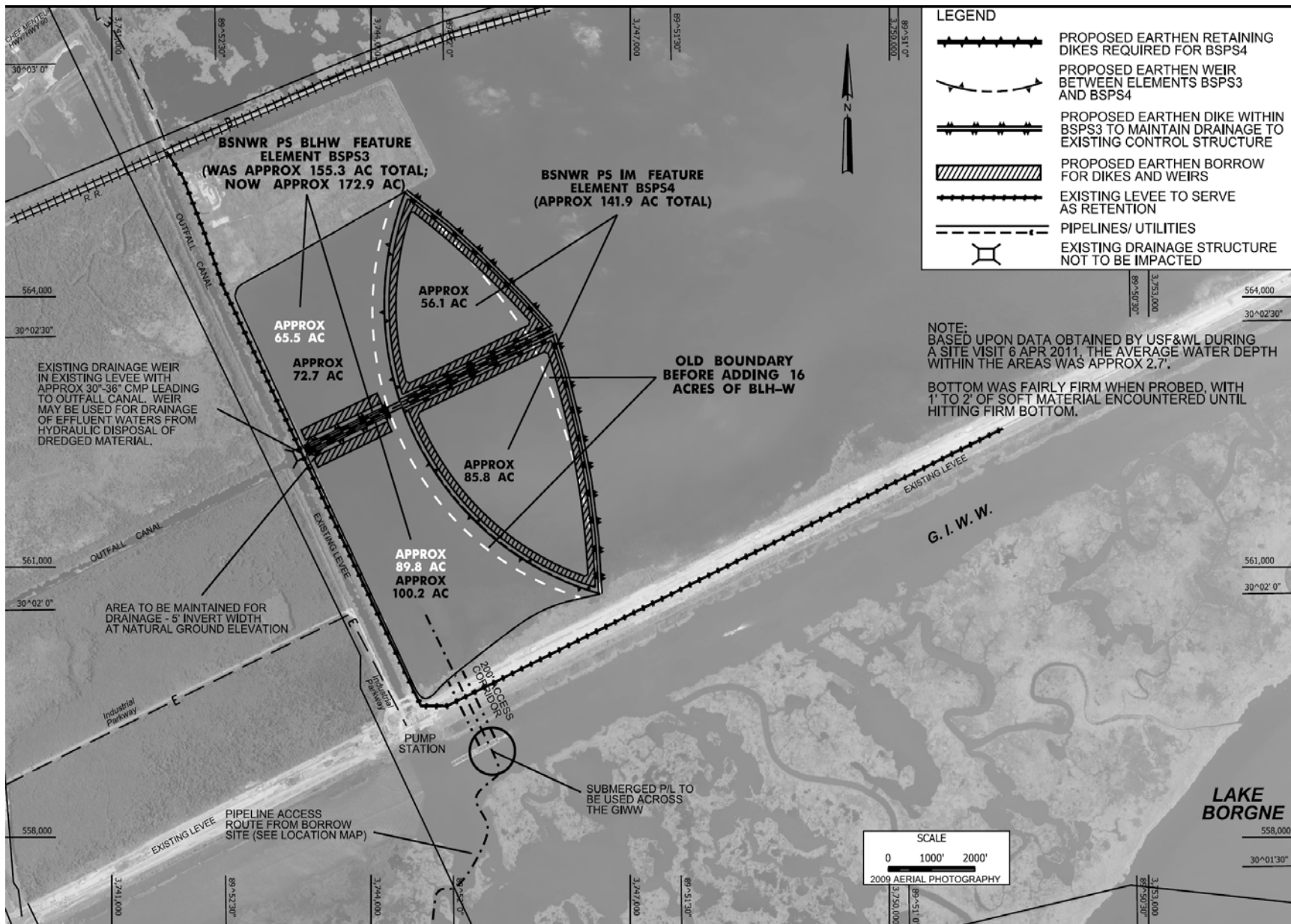


Figure 31: Possible Design Change to Bayou Sauvage Refuge PS BLH-W and Intermediate Marsh Project to Mitigate for Impacts to Refuge FS BLH



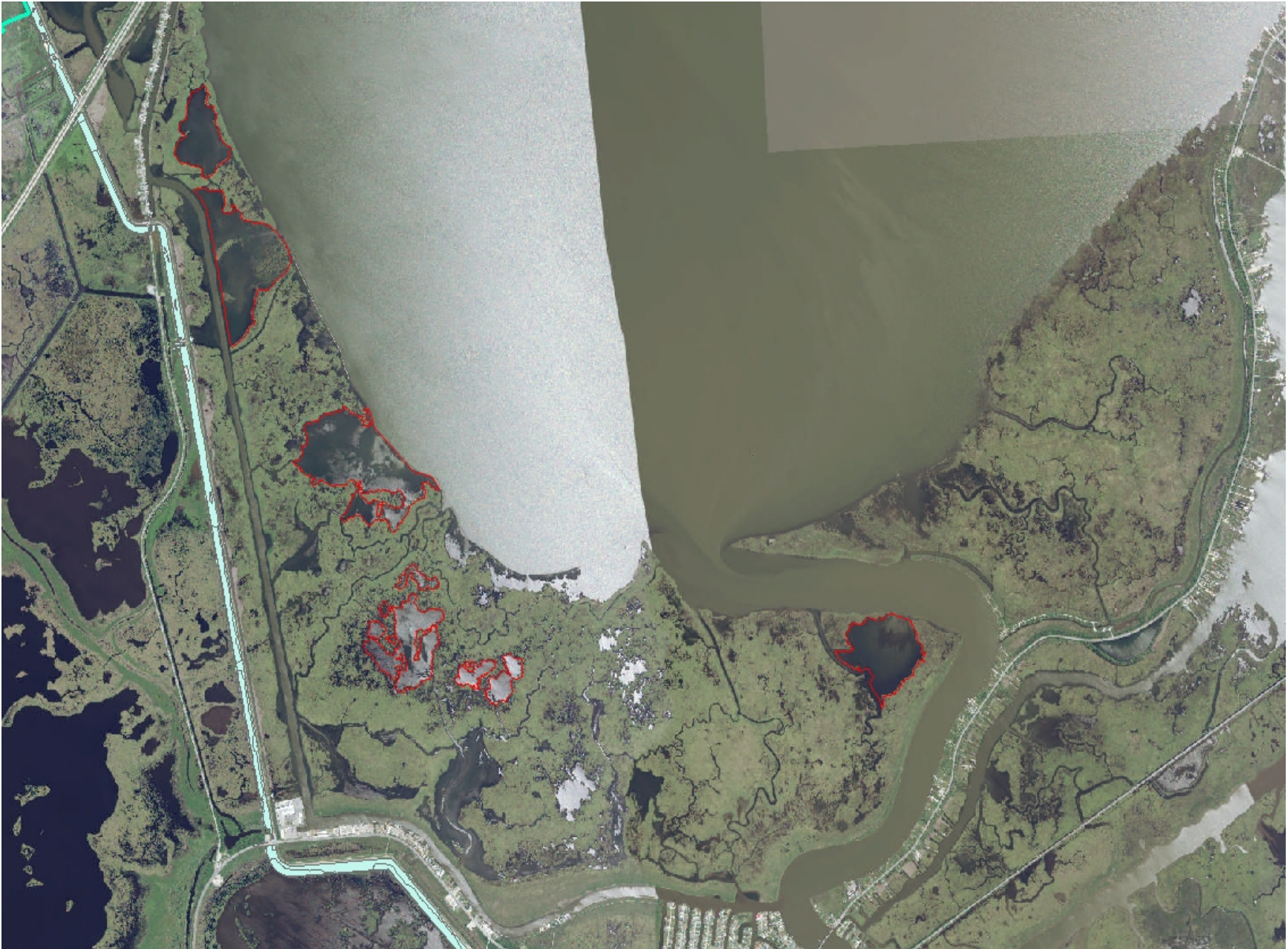


Figure 32: Potential Ponds Available for Bayou Sauvage FS Marsh Restoration and Enhancement Project Redesign



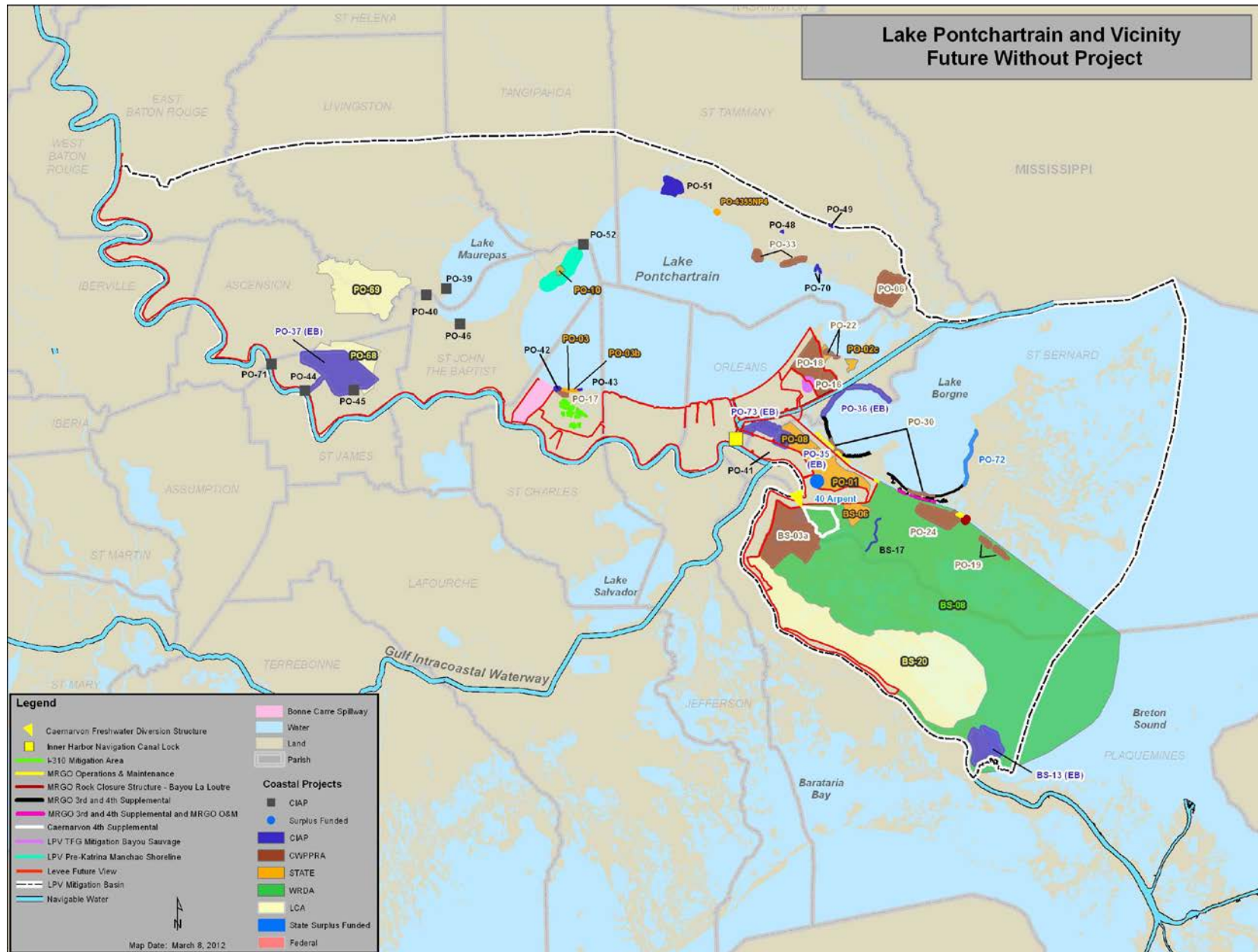


Figure 33: Projects Considered in the Future Without Project (FWOP) Condition or No Action Alternative



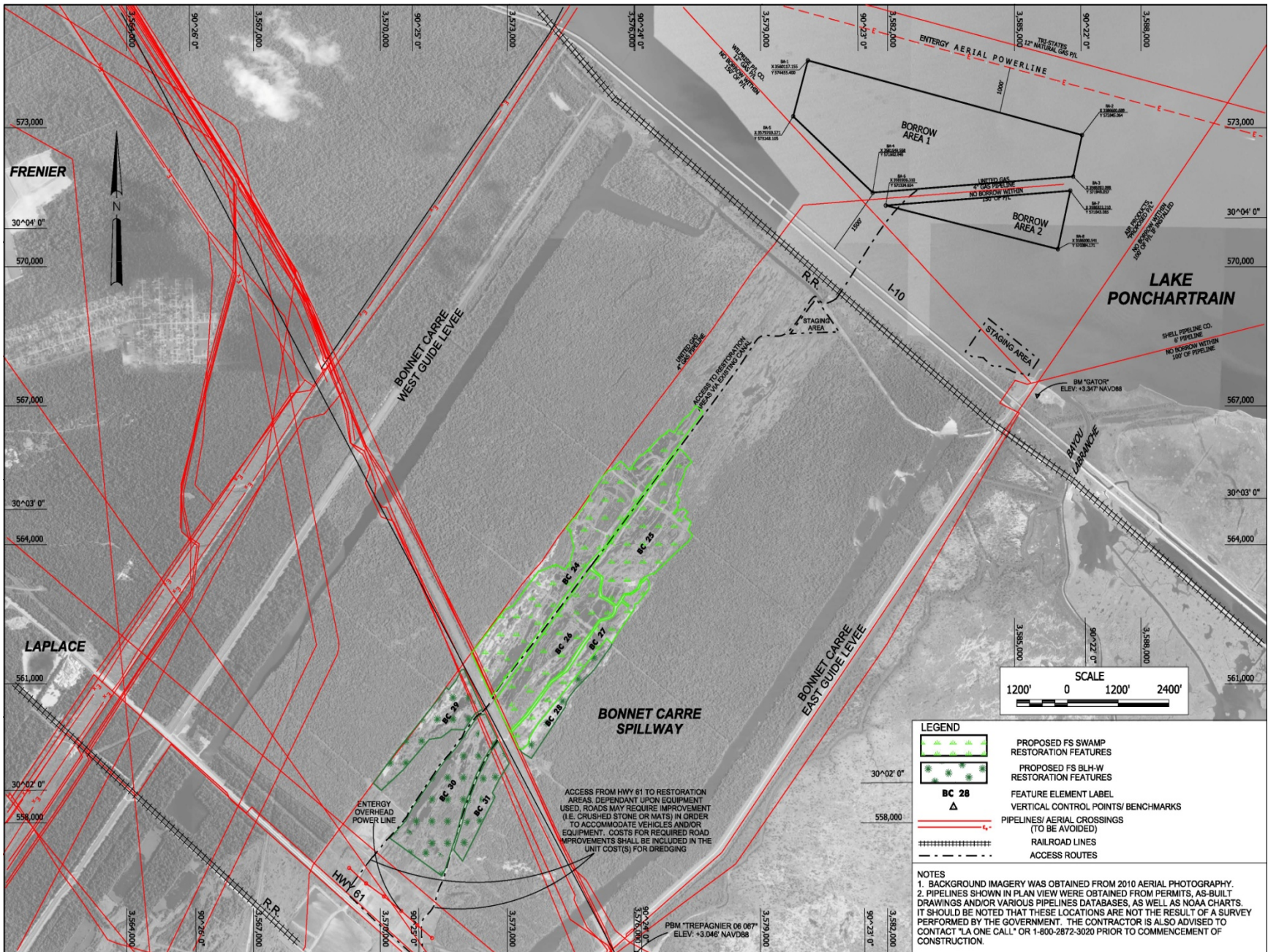
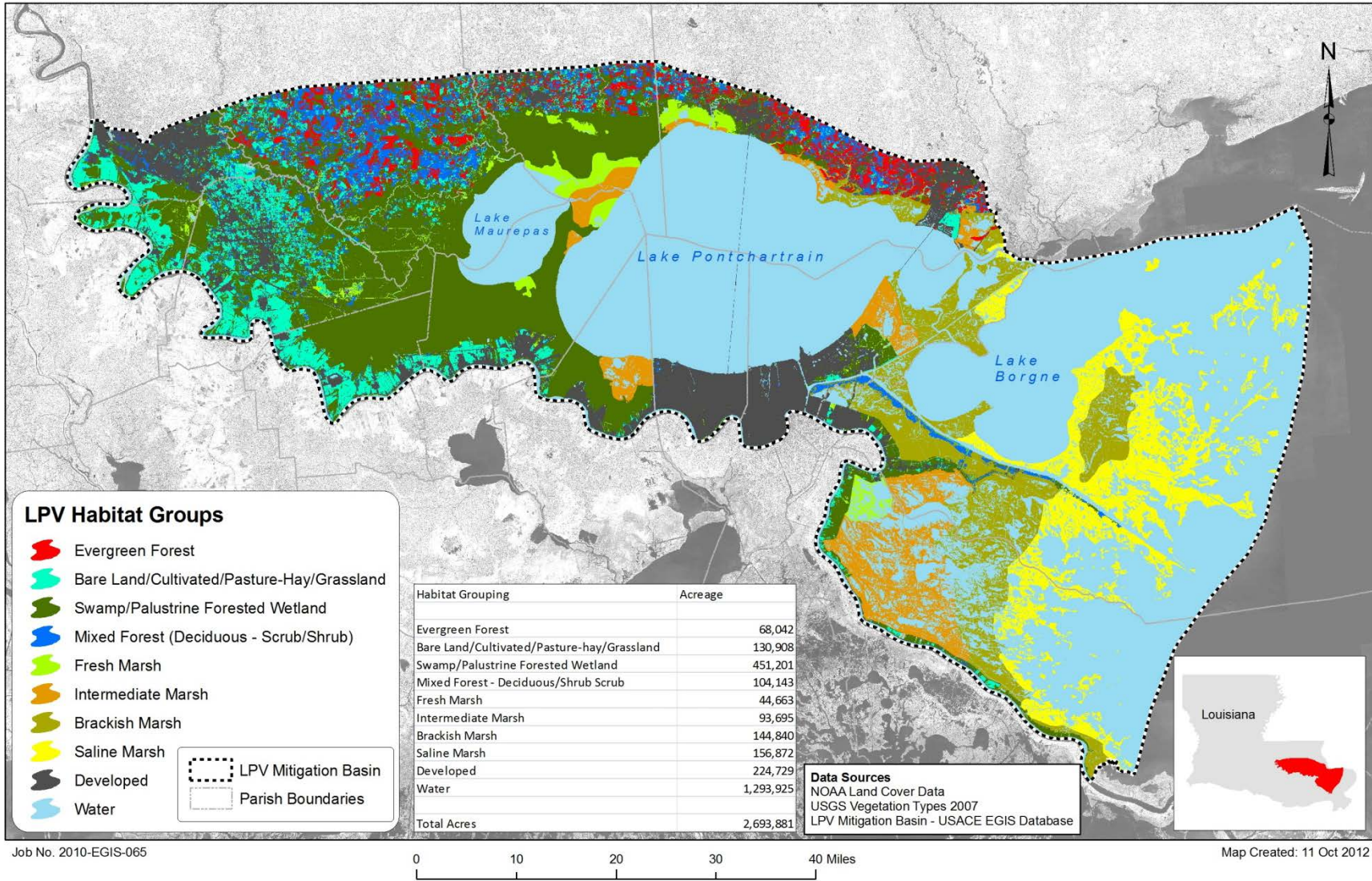


Figure 34: Bonnet Carre BLH-Wet and Swamp Restoration Projects



# LPV HSDRRS Mitigation Basin Habitats



Job No. 2010-EGIS-065

0 10 20 30 40 Miles

Figure 35: LPV HSDRRS Mitigation Basin Habitats





Figure 36: Hydrologic Units that Encompass Both a Project Footprint and an "Impaired" Waterbody



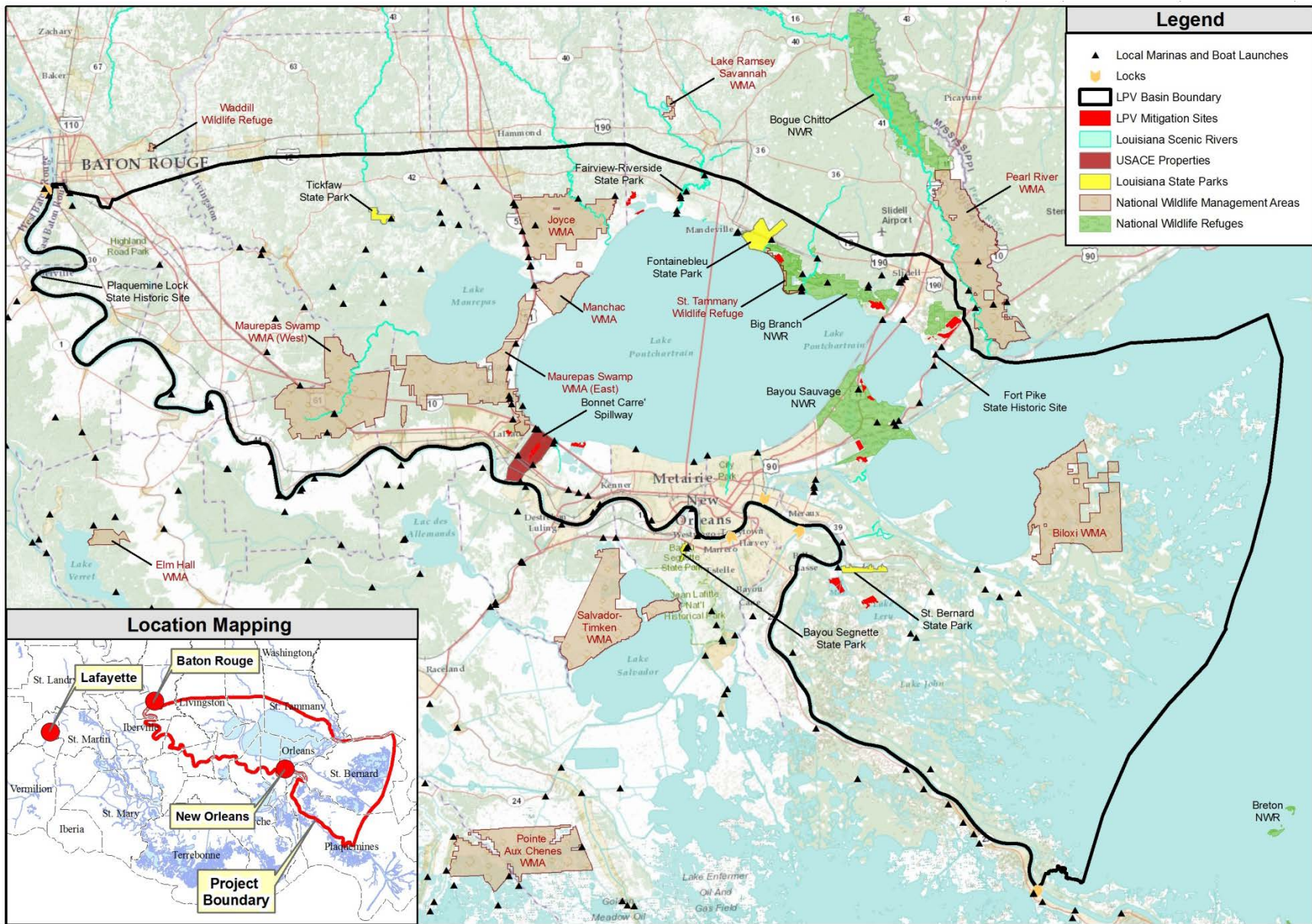


Figure 37: Recreational Features in the LPV Mitigation Basin



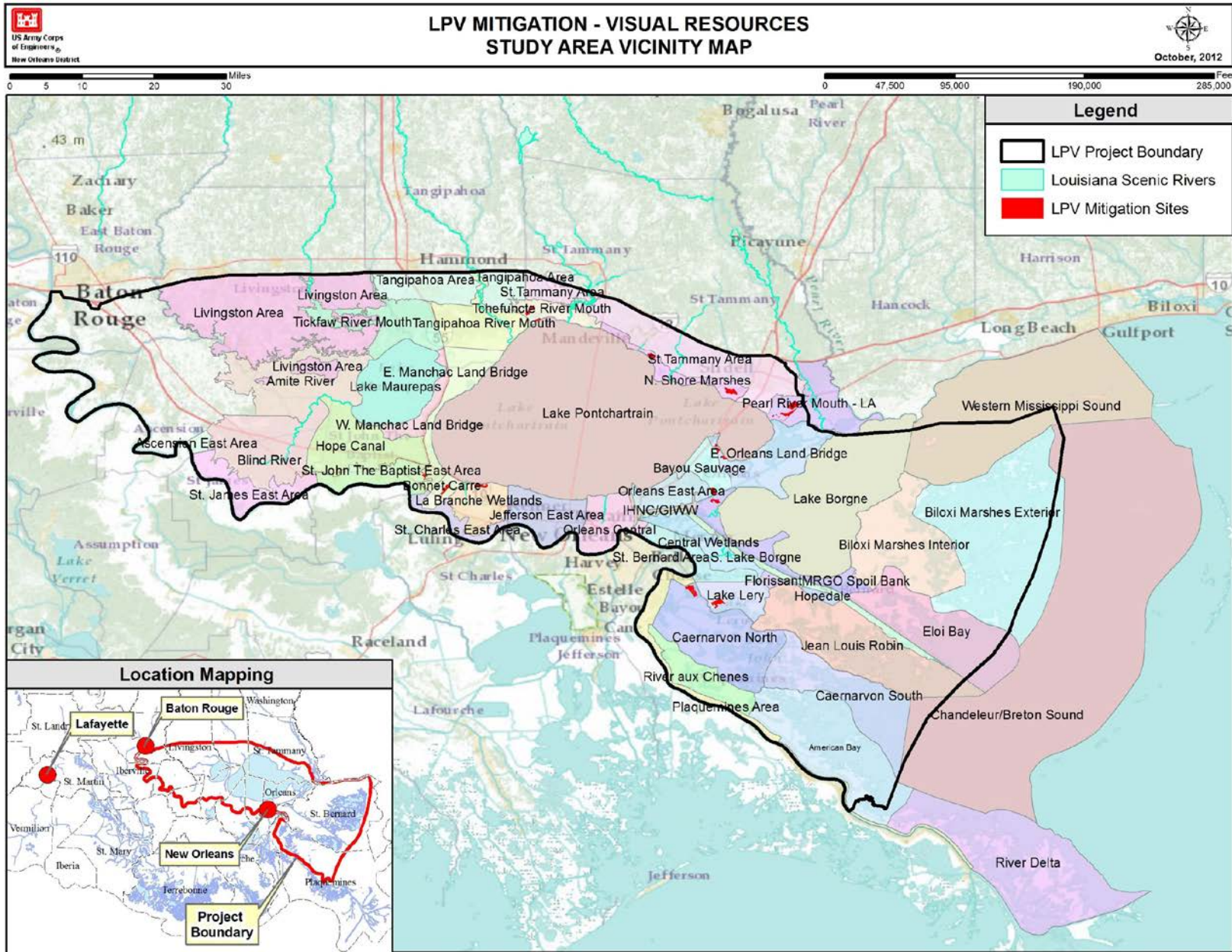


Figure 38: Visual Resources in the LPV Mitigation Basin.